



**FIND UK**  
PROPERTY

H4 PROPERTY TYPE

SMALL

3-BEDROOMS

NORTH EAST ENGLAND

MIDDLESBROUGH

THIS IS AN EXAMPLE PROPERTY SHEET LIVE SHEETS  
CONTAIN MORE SPECIFIC LOCATION DETAILS



# Best Locations for Investment

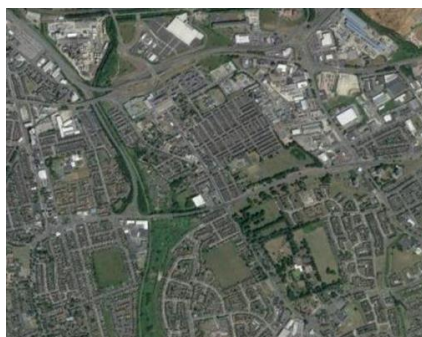
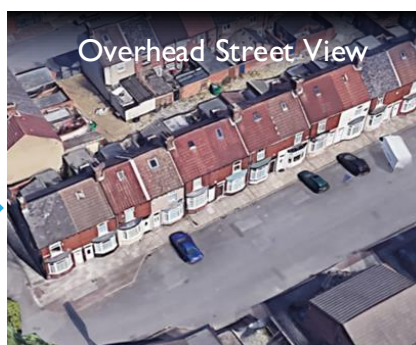
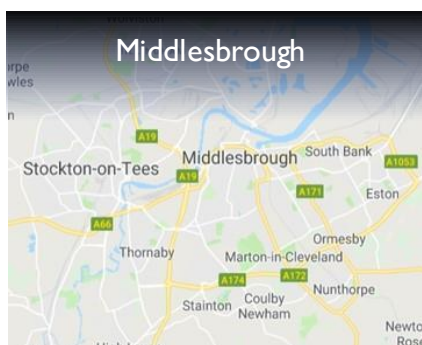
## Location Map



### North East England

- Middlesbrough
- Stockton
- Darlington
- Durham
- Redcar
- Hartlepool
- Saltburn & Skelton
- Ferryhill
- Bishop Auckland
- And Many More Towns

Tyne & Wear, Durham and North Yorkshire Areas







# H4 Property Type - North East

## Small 3-Bedrooms

### Front View

A small 3-bedroom mid-terrace house with bay window in a quaint area of Middlesbrough.



### Street Views





## H4 Property Type - North East

### Small 3-Bedrooms

#### Lounge

The lounge offers views to the front of the house and access to the rear garden and kitchen.



#### Kitchen

The kitchen provides space for worktops and kitchen appliances. It also provides access to the rear garden.





## H4 Property Type - North East Small 3-Bedrooms

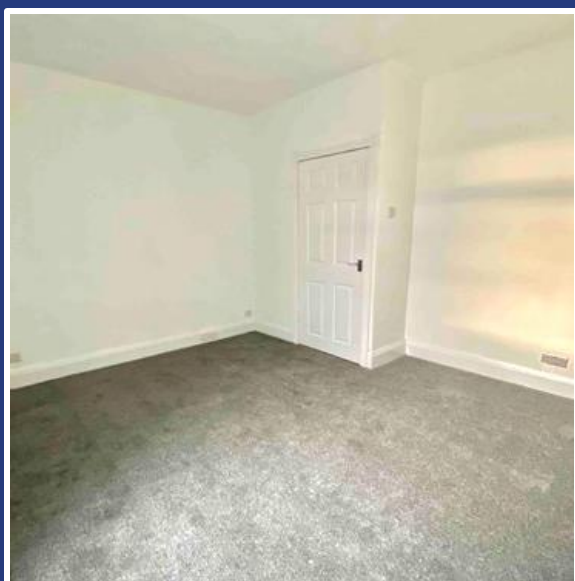
### Stairs and Landing

The staircase leads to the first-floor landing.



### Bedroom 1

Bedroom 1 overlooks the front of the property.







## H4 Property Type - North East Small 3-Bedrooms

### Bedroom 2

Bedroom 2 provides views to the front of the house.



### Bedroom 3

Bedroom 3 is currently being used as a storage room.



### Bathroom

The bathroom provides a sink, toilet and shower/bath facilities.



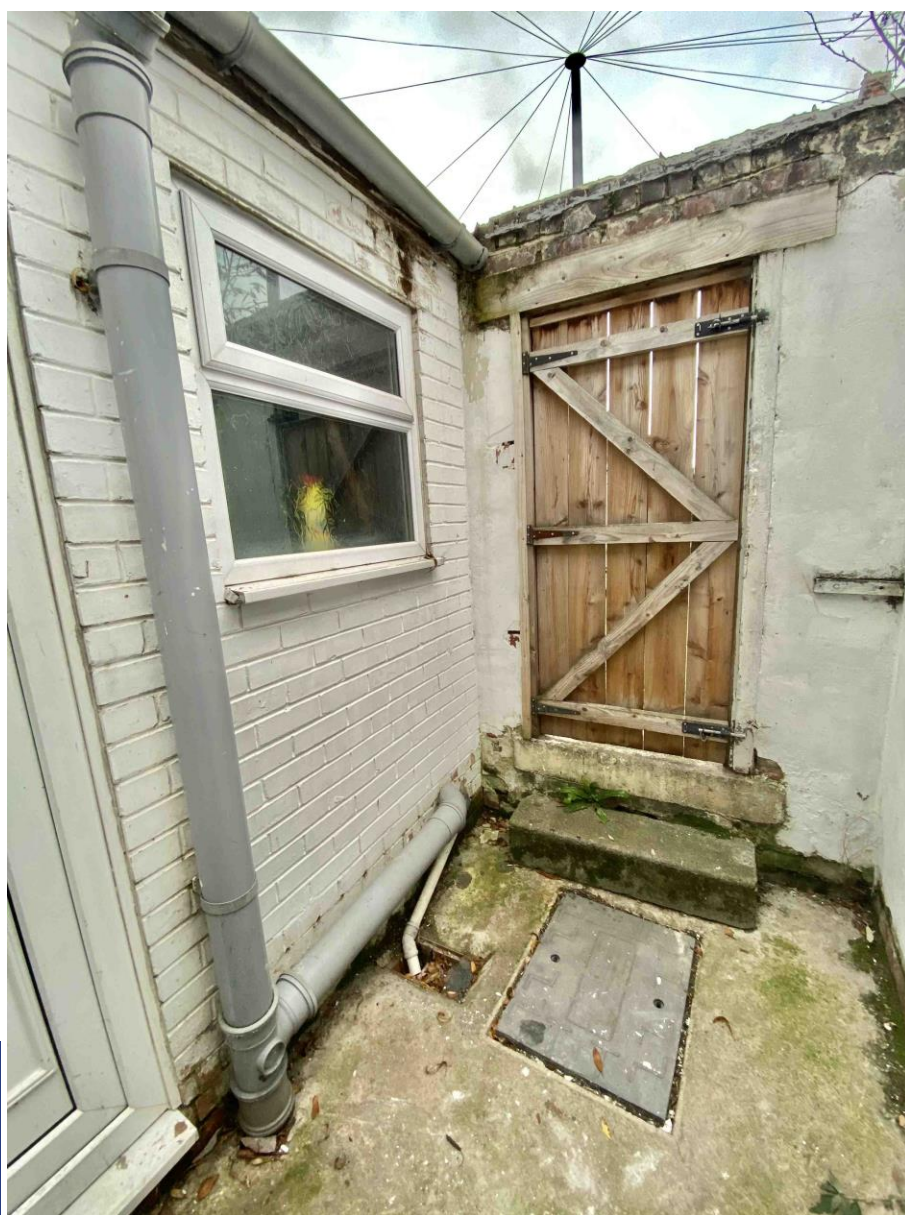


## H4 Property Type - North East

### Small 3-Bedrooms

#### Rear Yard

The rear yard is accessible through the kitchen.







# H4 Property Type - North East

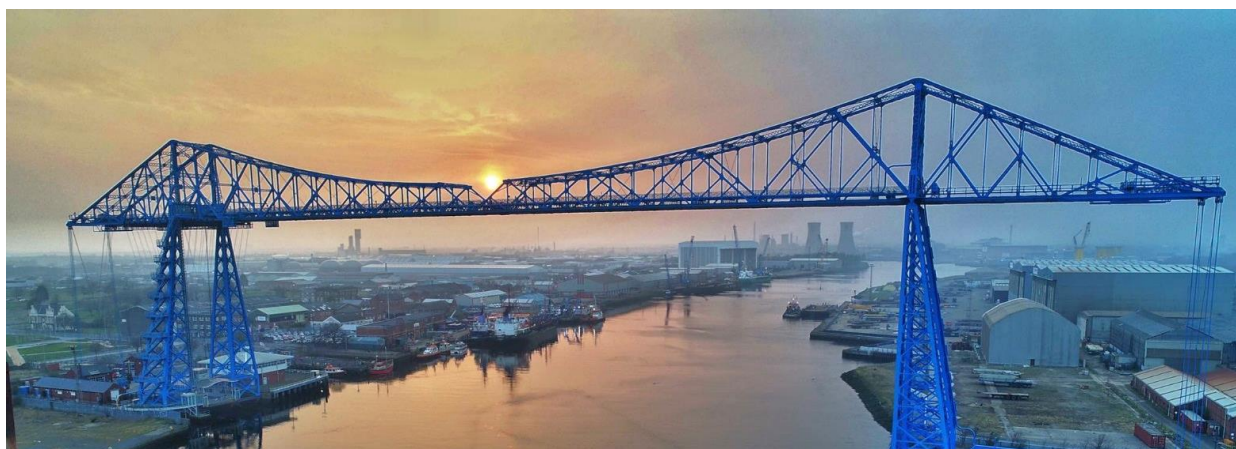
## Small 3-Bedrooms

### Middlesbrough - Teesside



Middlesbrough is the capital of Teesside, a metropolis around the River Tees and the Tees Valley.

It is famous for its football club, industry and Transporter Bridge, which connects the South and North ends of the river Tees. The Teesside University campus is in the heart of the town centre.



Middlesbrough Football Club  
Stadium



Teesside  
University Campus





+44 1282 882424  
admin@findukproperty.com

[www.findukproperty.com](http://www.findukproperty.com)