



FIND UK
PROPERTY

MIDDLESBROUGH

**SEMI-DETACHED
2-BEDROOMS**



Best Locations for Investment

Location Map



North East
England

Middlesbrough
Stockton
Darlington
Durham
Redcar
Hartlepool
Saltburn & Skelton
Ferryhill
Bishop Auckland
And Many More Towns

Tyne & Wear, Durham and
North Yorkshire Areas





Middlesbrough

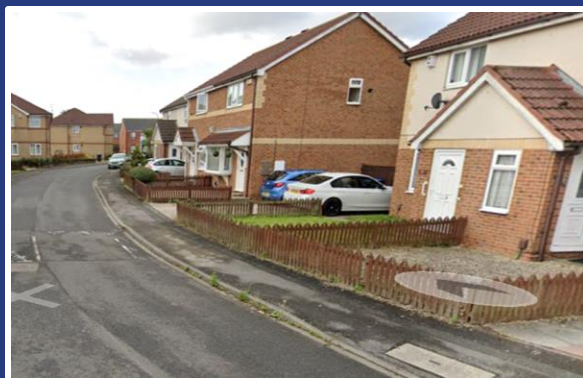
Semi-Detached 2-Bedrooms

Front View

A spacious 2 bed semi-detached property with a driveway and front and rear gardens. Located close to the centre of Middlesbrough and local amenities. The property will be further renovated and then rented out to tenants.



Street Views



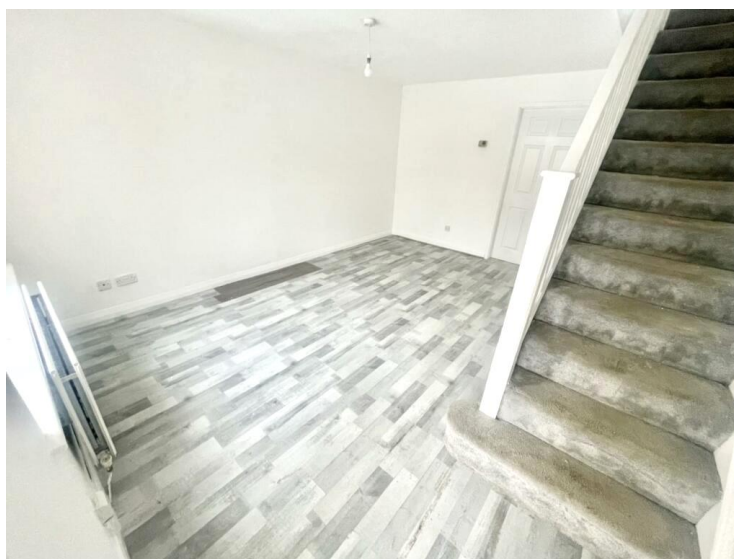


Middlesbrough

Semi-Detached 2-Bedrooms

Lounge

The lounge offers views to the front of the house and access to the kitchen and the rear garden.



Kitchen

The kitchen provides space for worktops and kitchen appliances. It also provides access to the rear garden.





Middlesbrough

Semi-Detached 2-Bedrooms

Bedroom 1

Bedroom 1 overlooks the front of the property over the front garden and driveway.



Bedroom 2

Bedroom 2 provides views to the rear of the property.





Middlesbrough

Semi-Detached 2-Bedrooms

Bathroom

The bathroom has a 3-piece suite and shower facilities.



Rear Garden

The rear garden is accessible through the kitchen





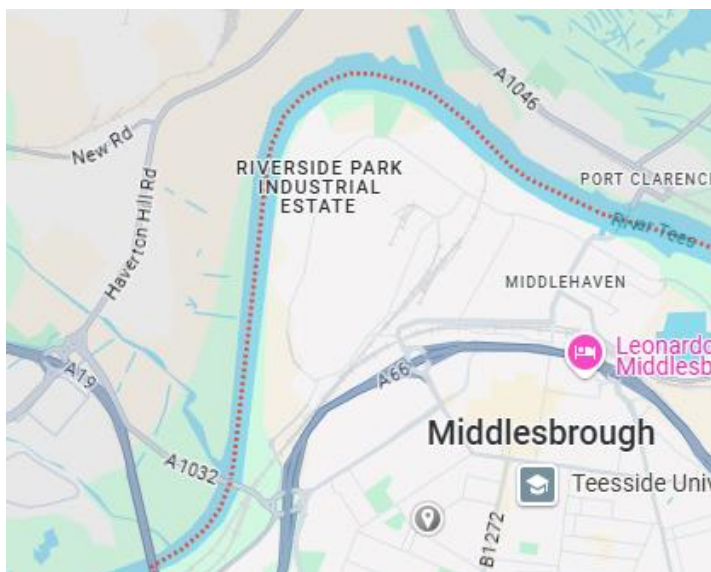
Middlesbrough

Semi-Detached 2-Bedrooms

Middlesbrough

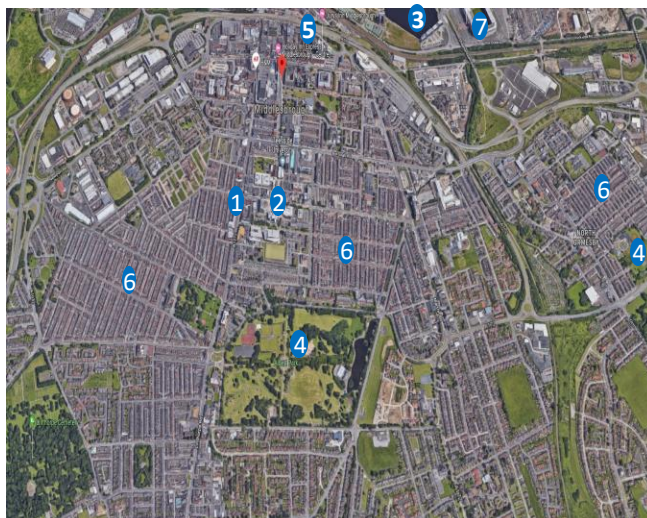
Middlesbrough is a town in the Northeast of England, situated by the River Tees. It has a strong history in industries like steel and iron, but today it's a place with a mix of modern attractions and historical charm.

The town is home to Teesside University and offers lots of things to do, like visiting the Middlesbrough Institute of Modern Art or walking across the iconic Transporter Bridge.



Map Key

1. Middlesbrough Town Centre
2. Teesside University
3. River Tees
4. Parks
5. Train Station
6. Terraced Residential Areas
7. Riverside Stadium





Middlesbrough

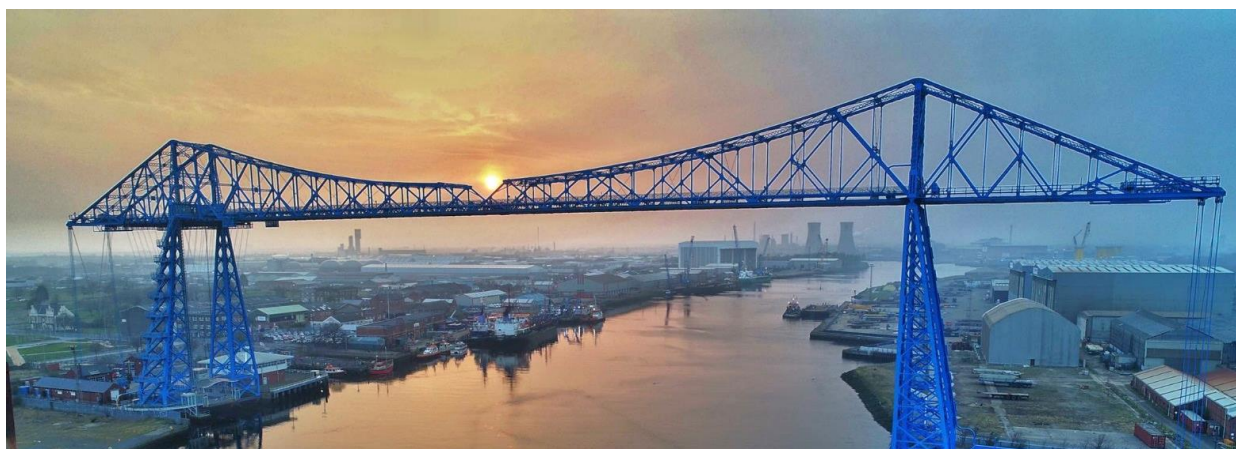
Semi-Detached 2-Bedrooms

Middlesbrough - Teesside



Middlesbrough is the capital of Teesside, a metropolis around the River Tees and the Tees Valley.

It is famous for its football club, industry and Transporter Bridge, which connects the South and North ends of the river Tees. The Teesside University campus is in the heart of the town centre.



Middlesbrough Football Club Stadium



Teesside University Campus



+44 1282 882424
admin@findukproperty.com

www.findukproperty.com