



FIND UK
PROPERTY

**FISHBURN
COUNTY DURHAM**

**SEMI-DETACHED
2-BEDROOMS**



Best Locations for Investment

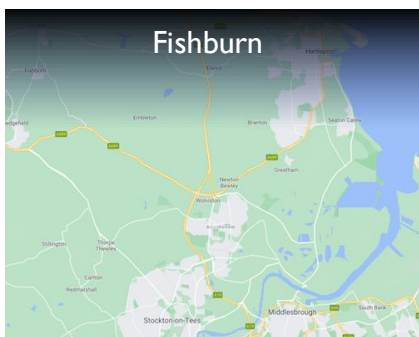
Location Map



North East
England

Middlesbrough
Stockton
Darlington
Durham
Redcar
Hartlepool
Saltburn & Skelton
Ferryhill
Bishop Auckland
And Many More Towns

Tyne & Wear, Durham and
North Yorkshire Areas





Fishburn, County Durham

Semi-Detached 2-Bedrooms

Front View

A large 2-bed semi-detached house with large front and rear garden areas. In close proximity to local park.



Street Views





Fishburn, County Durham

Semi-Detached 2-Bedrooms

Open Plan Lounge

Open plan space with large patio doors leading to the outside of the property. The lounge also offers access to the kitchen.



Kitchen

Large kitchen suite with access to the rear of the property and connected to the main lounge.



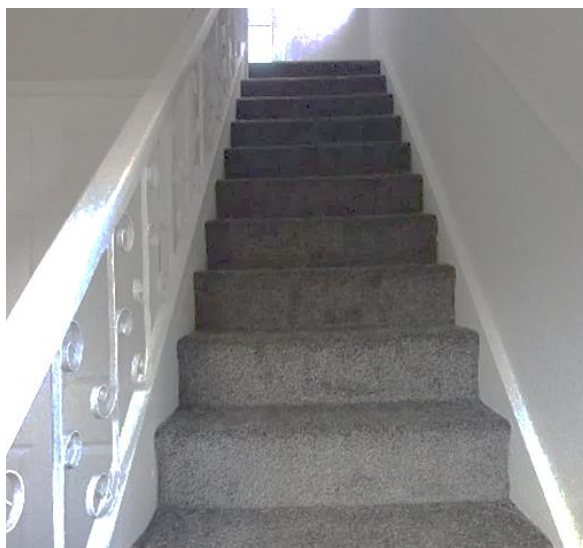


Fishburn, County Durham

Semi-Detached 2-Bedrooms

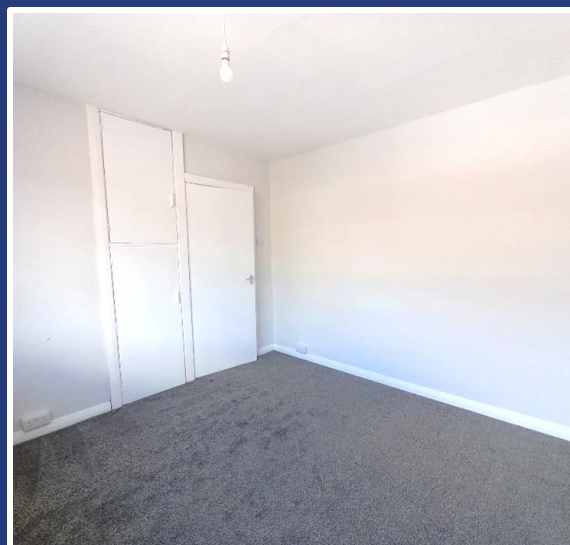
Stairs and Landing

The staircase leads to the first-floor landing.



Bedroom 1

Bedroom 1 overlooks the front of the property.





Fishburn, County Durham

Semi-Detached 2-Bedrooms

Bedroom 2

Bedroom 2 provides views to the rear of the property.



Bathroom

The bathroom has a pedestal sink, toilet, shower and bath facilities.





Fishburn, County Durham

Semi-Detached 2-Bedrooms

Rear Garden

The rear garden is accessible through the kitchen and large patio doors through the lounge.





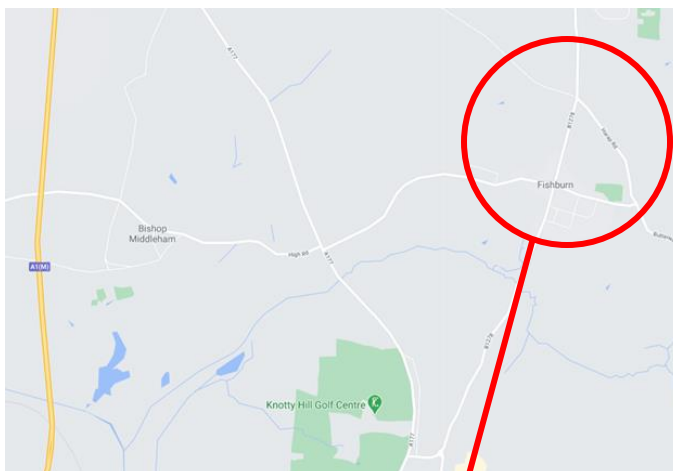
Fishburn, County Durham

Semi-Detached 2-Bedrooms

Fishburn- County Durham

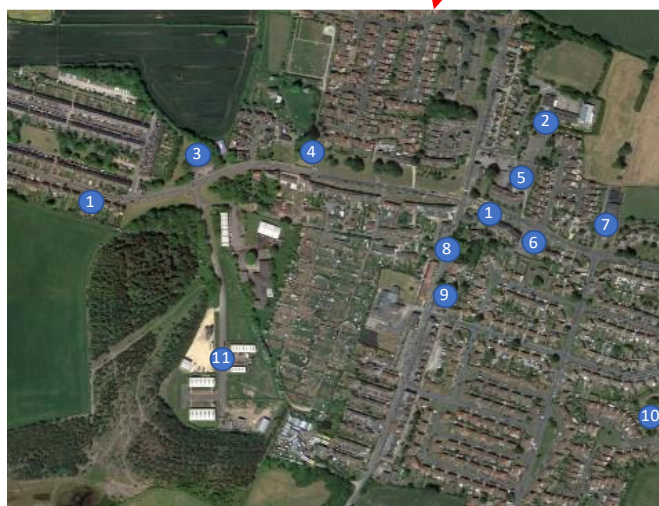
Fishburn is a small village located in County Durham, England. Historically, the village developed around coal mining, which was a significant industry in the region during the 19th and early 20th centuries.

Today, Fishburn has a more residential character, with a close-knit community and a mix of local amenities.



Map Key

1. Health Centres
2. Local schools
3. Ambulance service
4. Religious buildings
5. Gym
6. Mini supermarket
7. Community centre
8. Village centre
9. Post office
10. Town Centre
11. Park
12. Industrial shops



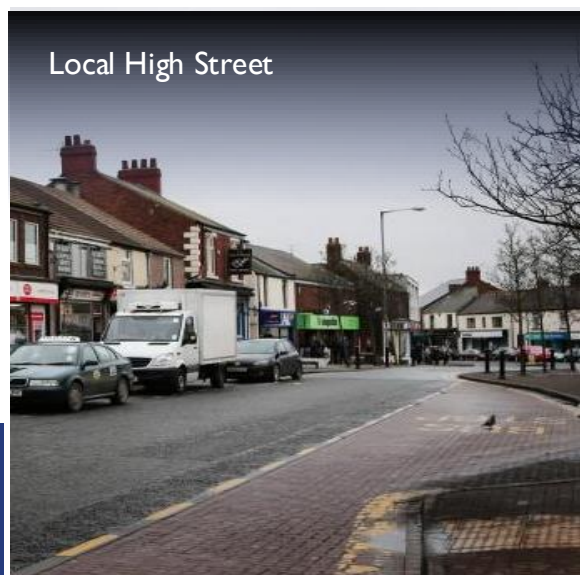


Fishburn, County Durham

Semi-Detached 2-Bedrooms

Ferryhill, County Durham

A semi-rural location close to local countryside and rambling routes. Just a 10 minute drive from Fishburn.





+44 1282 882424
admin@findukproperty.com

www.findukproperty.com