



FIND UK
PROPERTY

**NORTH ORMSBY
MIDDLESBROUGH**

**LARGE
3-BEDROOMS**



Best Locations for Investment

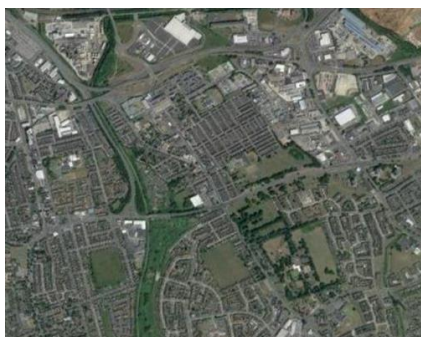
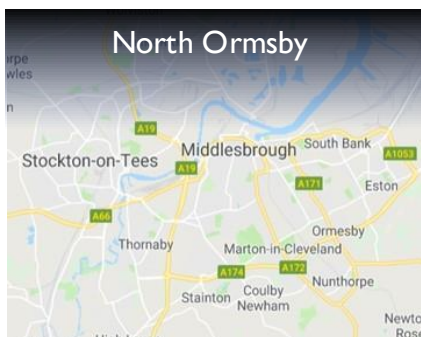
Location Map



North East England

- Middlesbrough**
- Stockton**
- Darlington**
- Durham**
- Redcar**
- Hartlepool**
- Saltburn & Skelton**
- Ferryhill**
- Bishop Auckland**
- And Many More Towns**

Tyne & Wear, Durham and
North Yorkshire Areas





Middlesbrough

Large 3-Bedrooms

Front View

This property is a spacious 2-bed mid-terrace house with large bay-front window and is located in North Ormsby, in Middlesbrough close to the University and other amenities.



Street Views





Middlesbrough

Large 3-Bedrooms

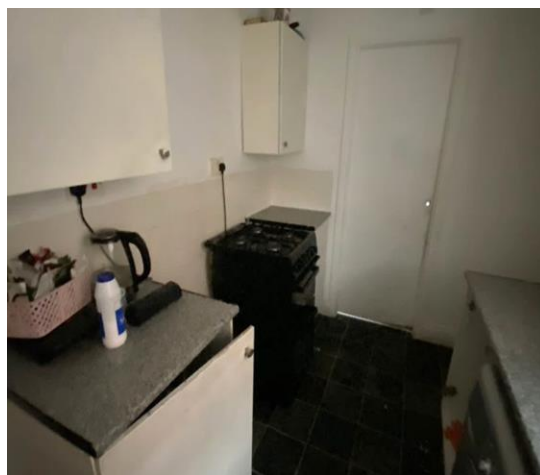
Lounge

The lounge offers generous space and views to the front of the house with access to kitchen and diner.



Kitchen

The kitchen provides space for worktops and kitchen appliances.



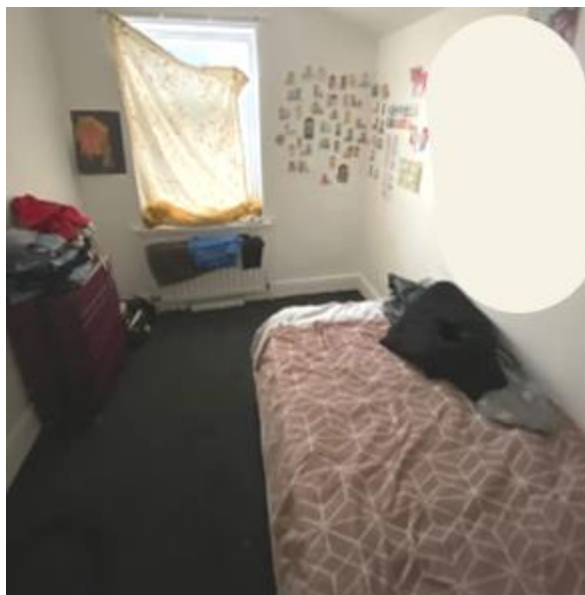
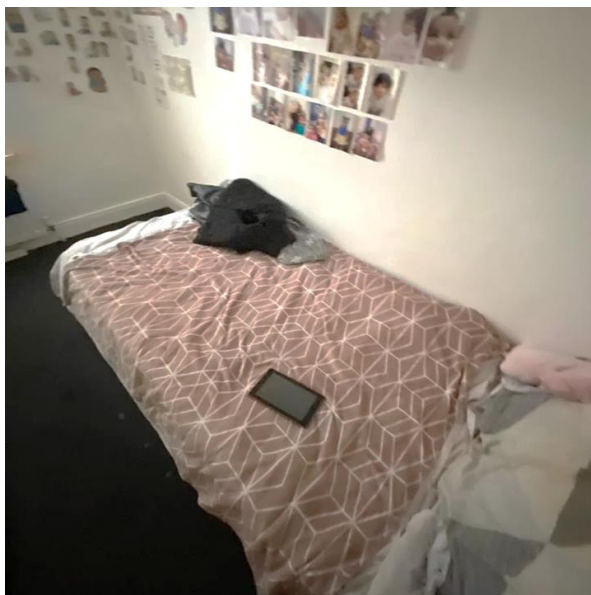


Middlesbrough

Large 3-Bedrooms

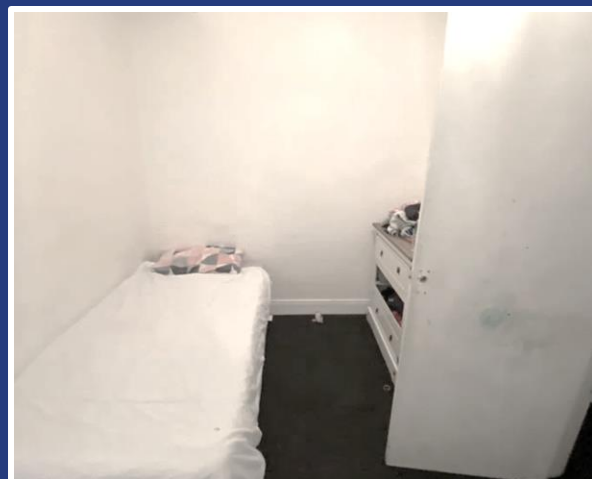
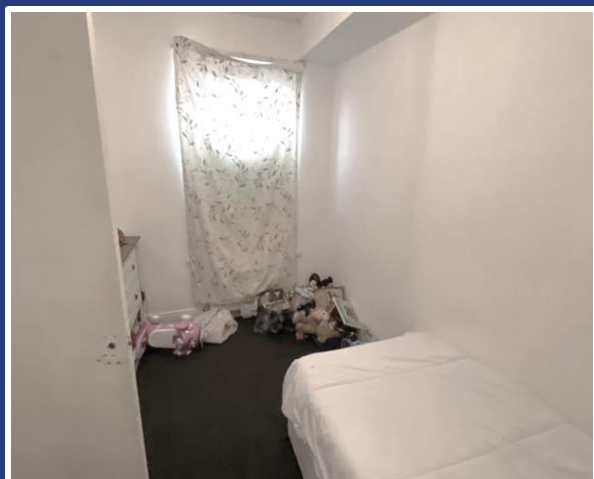
Bedroom 1

Bedroom 1 provides views to the front of the property.



Bedroom 2

Bedroom 2 provides views to the rear garden.



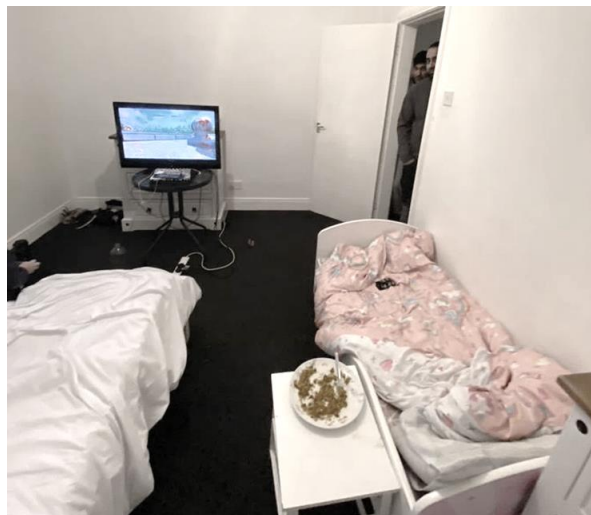
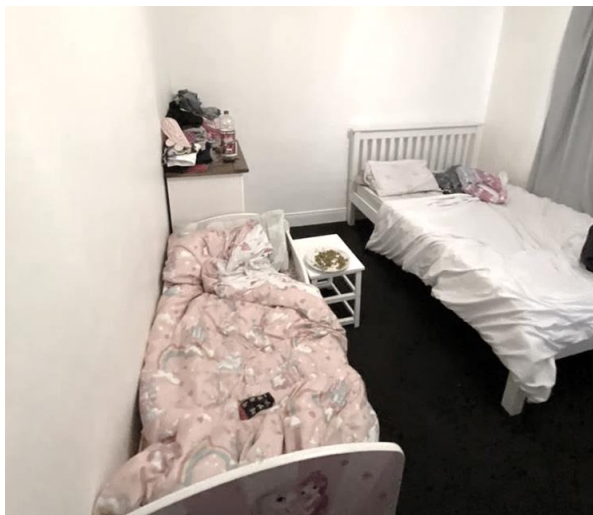


Middlesbrough

Large 3-Bedrooms

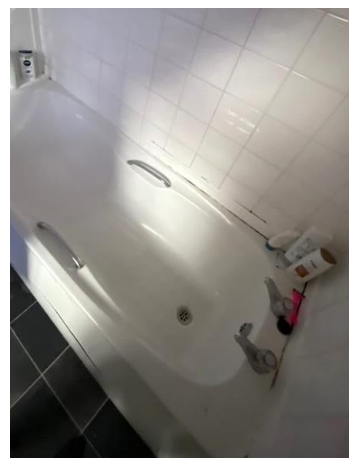
Bedroom 3

Bedroom 3 provides views to the front of the house.



Bathroom

The bathroom provides a sink, toilet and shower/bath facilities.





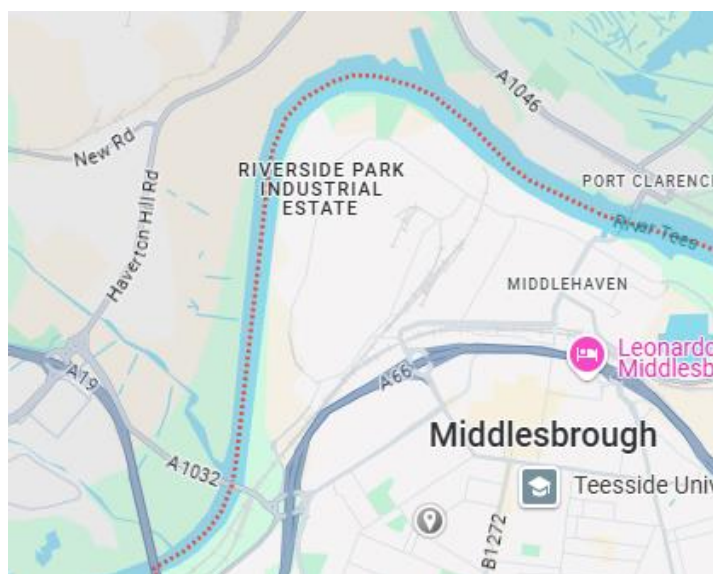
Middlesbrough

Large 3-Bedrooms

Middlesbrough

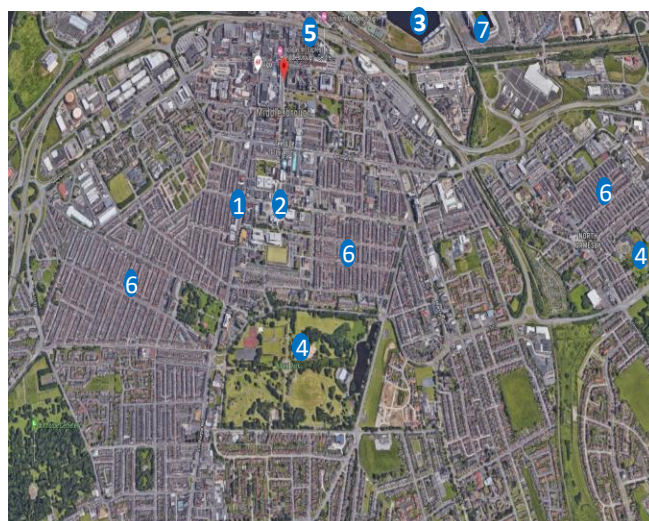
Middlesbrough is a town in the Northeast of England, situated by the River Tees. It has a strong history in industries like steel and iron, but today it's a place with a mix of modern attractions and historical charm.

The town is home to Teesside University and offers lots of things to do, like visiting the Middlesbrough Institute of Modern Art or walking across the iconic Transporter Bridge.



Map Key

1. Middlesbrough Town Centre
2. Teesside University
3. River Tees
4. Parks
5. Train Station
6. Terraced Residential Areas
7. Riverside Stadium





Middlesbrough

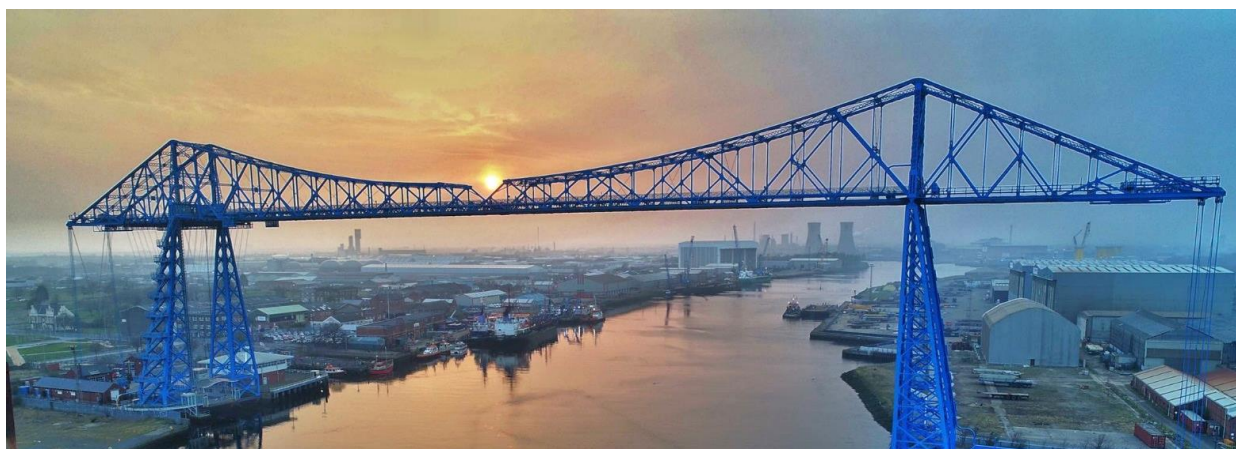
Large 3-Bedrooms

Middlesbrough - Teesside



Middlesbrough is the capital of Teesside, a metropolis around the River Tees and the Tees Valley.

It is famous for its football club, industry and Transporter Bridge, which connects the South and North ends of the river Tees. The Teesside University campus is in the heart of the town centre.



Middlesbrough Football Club Stadium



Teesside University Campus



+44 1282 882424
admin@findukproperty.com

www.findukproperty.com