



**FIND UK**  
PROPERTY

**MIDDLESBROUGH**

**LARGE  
2-BEDROOMS**



# Best Locations for Investment

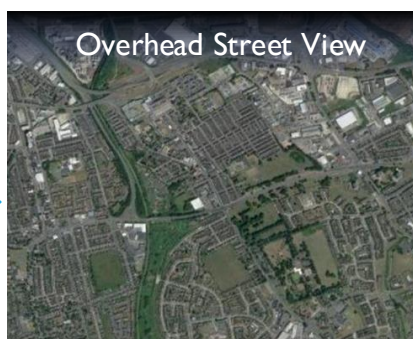
## Location Map



### North East England

- Middlesbrough**
- Stockton**
- Darlington**
- Durham**
- Redcar**
- Hartlepool**
- Saltburn & Skelton**
- Ferryhill**
- Bishop Auckland**
- And Many More Towns**

Tyne & Wear, Durham and  
North Yorkshire Areas





# Middlesbrough

## Large 2-Bedrooms

### Front View

A mid-terrace house with front double bay windows. Overlooking green space and park area.



### Street Views





# Middlesbrough

## Large 2-Bedrooms

### Lounge

The lounge offers views to the front of the house and access to the rear garden and kitchen.



### Kitchen

The kitchen provides space for worktops and kitchen appliances. It also provides access to the rear garden.





# Middlesbrough

## Large 2-Bedrooms

### Stairs and Landing

The stairs lead to the first floor and landing of the property with access to a loft.



### Bedroom 1

Bedroom 1 provides views to the front of the property.





# Middlesbrough

## Large 2-Bedrooms

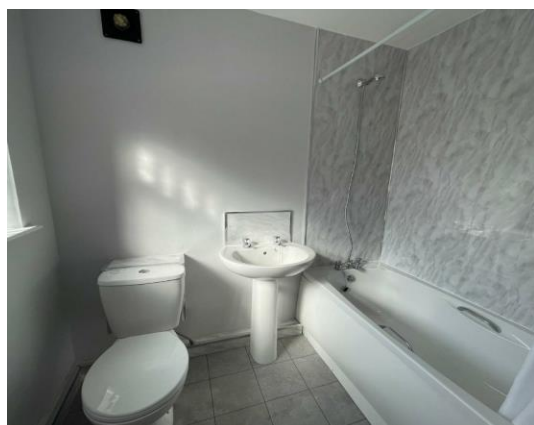
### Bedroom 2

Bedroom 2 provides views to the front of the house.



### Bathroom

The bathroom provides a sink, toilet and shower/bath facilities.





# Middlesbrough

## Large 2-Bedrooms

### Rear Garden

The rear garden is accessible through the kitchen.





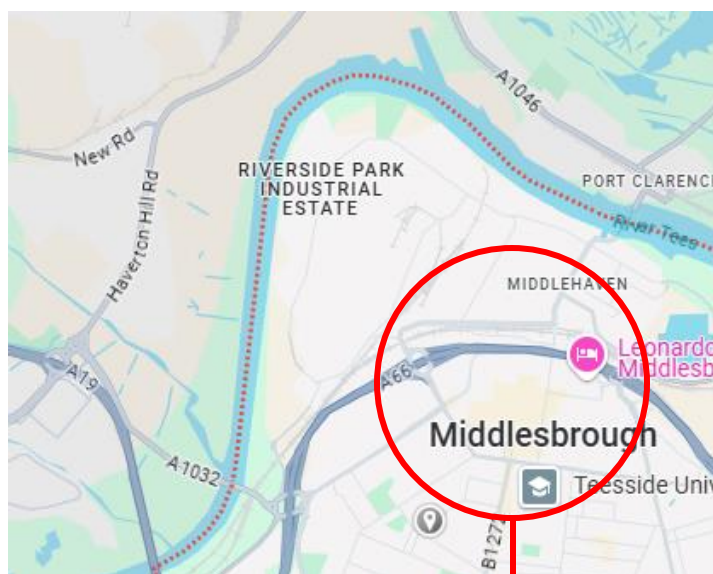
# Middlesbrough

## Large 2-Bedrooms

### Middlesbrough

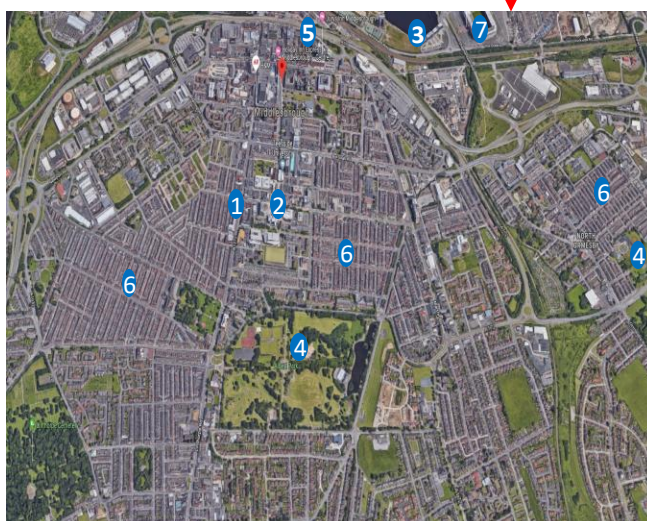
Middlesbrough is a town in the Northeast of England, situated by the River Tees. It has a strong history in industries like steel and iron, but today it's a place with a mix of modern attractions and historical charm.

The town is home to Teesside University and offers lots of things to do, like visiting the Middlesbrough Institute of Modern Art or walking across the iconic Transporter Bridge.



### Map Key

1. Middlesbrough Town Centre
2. Teesside University
3. River Tees
4. Parks
5. Train Station
6. Terraced Residential Areas
7. Riverside Stadium







# Middlesbrough

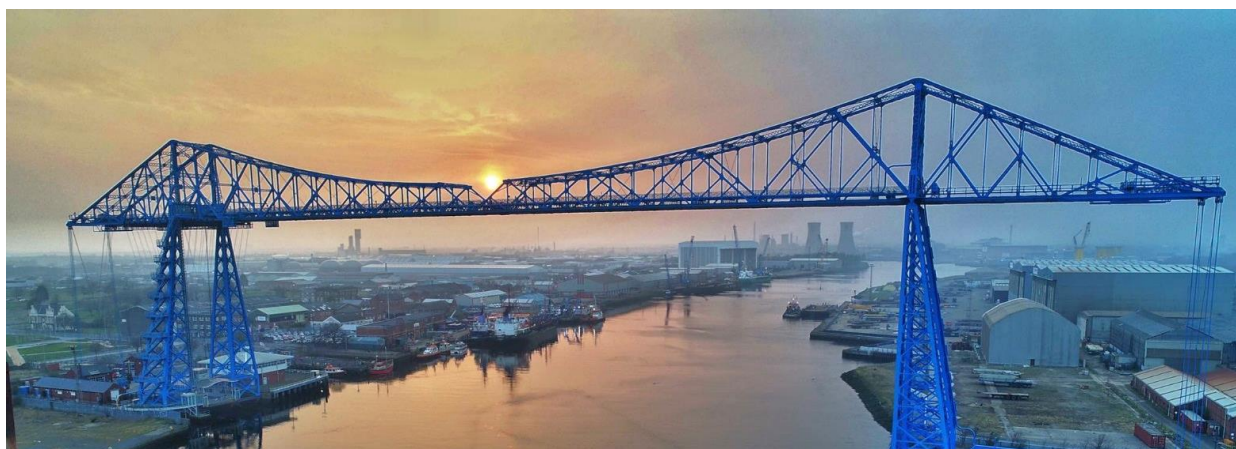
## Large 2-Bedrooms

### Middlesbrough - Teesside



Middlesbrough is the capital of Teesside, a metropolis around the River Tees and the Tees Valley.

It is famous for its football club, industry and Transporter Bridge, which connects the South and North ends of the river Tees. The Teesside University campus is in the heart of the town centre.



Middlesbrough Football Club Stadium



Teesside University Campus



+44 1282 882424  
admin@findukproperty.com

[www.findukproperty.com](http://www.findukproperty.com)