

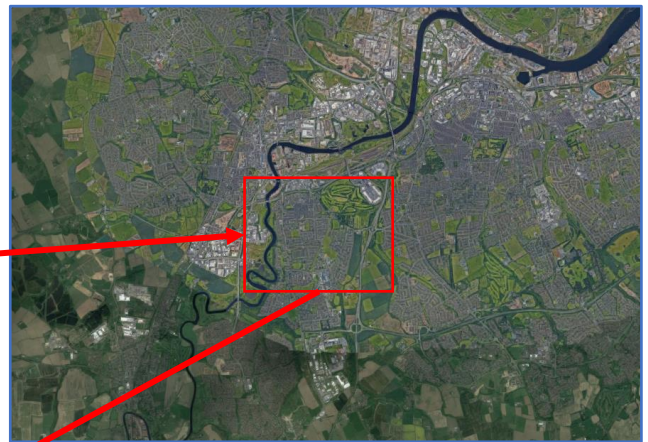


# H7 Thornaby, Stockton – 2 Bed Semi-detached

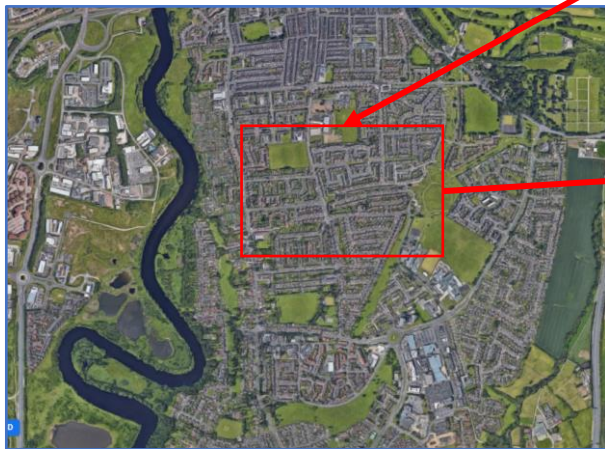
## Location Map



## Stockton South (Thornaby) Teesside



## Thornaby Area





# H7 Thornaby, Stockton – 2 Bed Semi-detached

## Front View

A large 2 bed semi-detached property located in a cul-de-sac in popular residential area of Stockton. IT has large front and rear garden areas. The property will be renovated and then rented out.



Overhead Front View

Overhead Rear View





# H7 Thornaby, Stockton – 2 Bed Semi-detached

## Street Views



Tel: 01282 88 24 24

[sales@findukproperty.com](mailto:sales@findukproperty.com)

[www.findukproperty.com](http://www.findukproperty.com)





# H7 Thornaby, Stockton – 2 Bed Semi-detached

## Community View

The property is in a prime location close to local shops, travel links and green spaces.



**Top left:** Bassleton Wood and the Holmes

**Bottom left:** Asda Thornaby Store

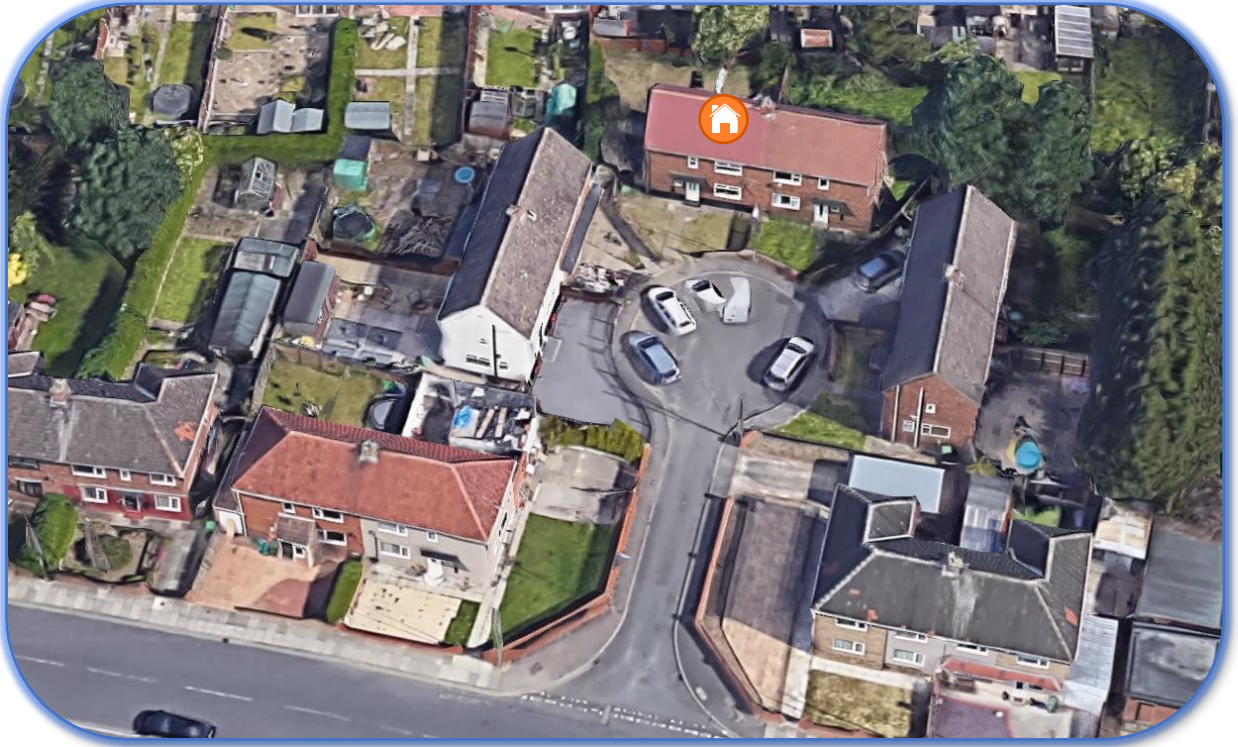
**Bottom right:** Thornaby Dental Centre





# H7 Thornaby, Stockton – 2 Bed Semi-detached

## Overhead Views



Tel: 01282 88 24 24

[sales@findukproperty.com](mailto:sales@findukproperty.com)

[www.findukproperty.com](http://www.findukproperty.com)



National Federation of Property Professionals Accredited Staff





# H7 Thornaby, Stockton – 2 Bed Semi-detached

Entrance and Large Lounge





# H7 Thornaby, Stockton – 2 Bed Semi-detached

Kitchen / Dining area





# H7 Thornaby, Stockton – 2 Bed Semi-detached

Hallway, stairs and landing







# H7 Thornaby, Stockton – 2 Bed Semi-detached

## Bedroom 1





# H7 Thornaby, Stockton – 2 Bed Semi-detached

## Bedroom 2





# H7 Thornaby, Stockton – 2 Bed Semi-detached

## Bathroom



Tel: 01282 88 24 24

[sales@findukproperty.com](mailto:sales@findukproperty.com)

[www.findukproperty.com](http://www.findukproperty.com)





# H7 Thornaby, Stockton – 2 Bed Semi-detached

Rear garden areas





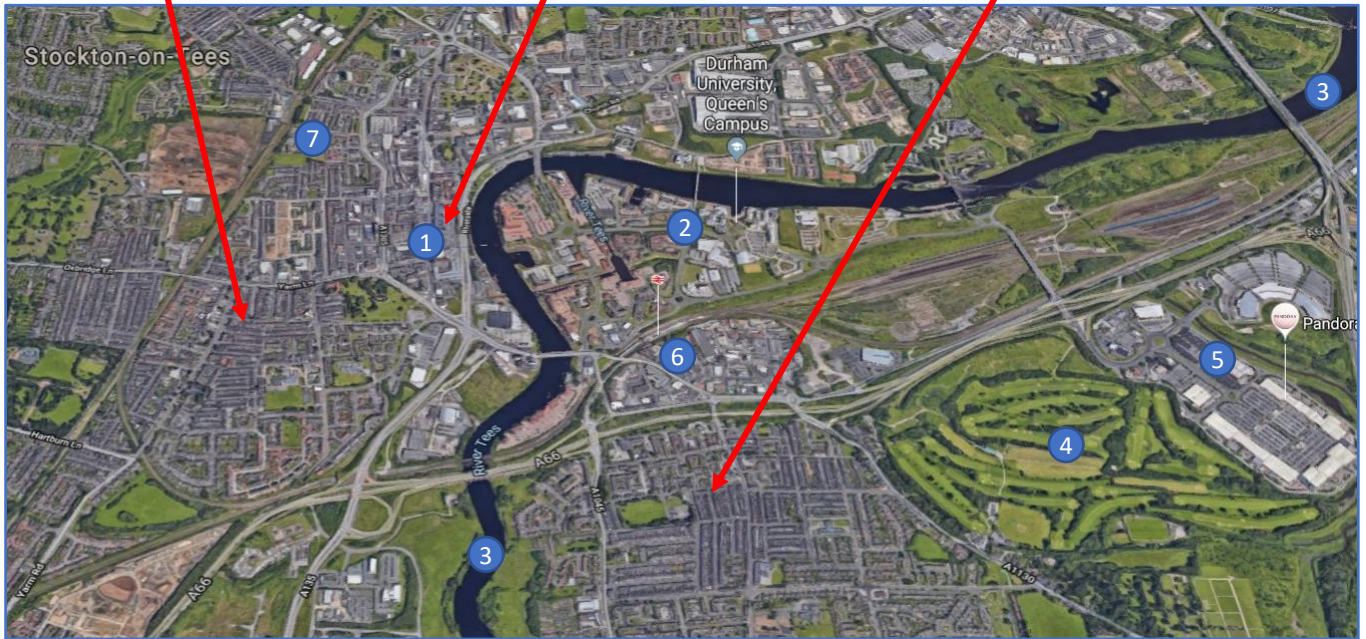
# H7 Thornaby, Stockton – 2 Bed Semi-detached

## Stockton Area - Teesside

### Stockton West

### Town Centre


### Stockton South (Thornaby)



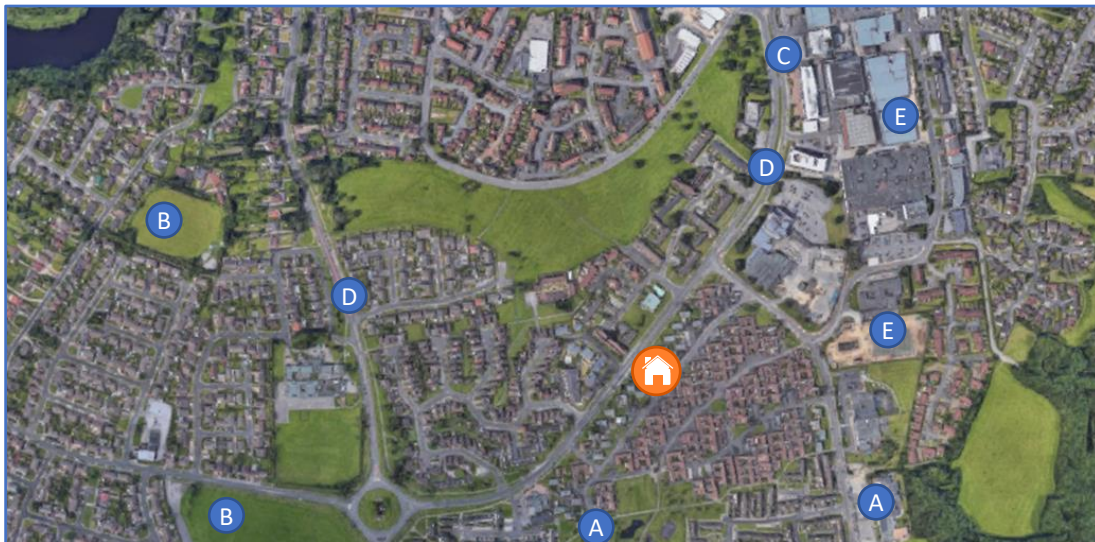
#### Map Key

- 1. Stockton Town Centre
- 2. Durham University – Queens Campus
- 3. River Tees
- 4. Golf Course
- 5. Teesside Shopping Park & Golf Course
- 6. South Stockton – Thornaby Train Station
- 7. Stockton Train Station

- A. Schools - various
- B. Recreational – play areas
- C. Shops along high street
- D. Bus Routes to Town Centre
- E. Local Supermarket

 Location of Property

## Stockton South (Thornaby)





# H7 Thornaby, Stockton – 2 Bed Semi-detached

## Stockton-on-Tees

A large market town in County Durham situated close to the River Tees and with excellent transport links to Middlesbrough and A-roads connecting the North and Middle of the UK.

Recent investments have led to plans to completely re-furbish and modernise the town centre and open it up towards the river.



Aerial view of Stockton Town Centre next to the River Tees

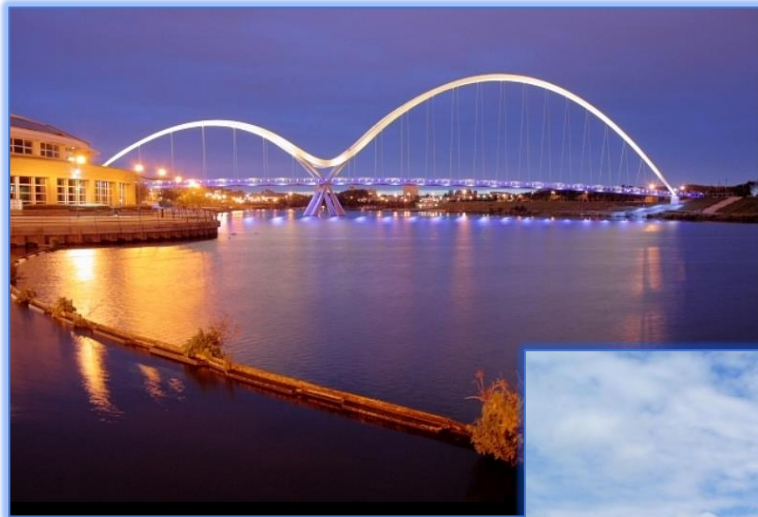




# H7 Thornaby, Stockton – 2 Bed Semi-detached

## Durham University – Queens Campus

The University is situated on the River Tees and is linked to Stockton town centre *via* the bridges, below.



Infinity Bridge (left) and Millennium Bridge (below) across the river Tees

