



# H7 Fishburn, Teesside – 2-Bed Semi

## Location Map



## Fishburn: Close to Stockton-on-Tees & Hartlepool



Overhead Street View







# H7 Fishburn, Teesside – 2-Bed Semi

## Front View

A large 2-bed semi detached house with large front and rear garden areas. In close proximity to local park.



Road side view of property







# H7 Fishburn, Teesside – 2-Bed Semi

## Local Park

Millfield play park nearby





# H7 Fishburn, Teesside – 2-Bed Semi

## Local Street Views



Tel: 01282 88 24 24

[sales@findukproperty.com](mailto:sales@findukproperty.com)

[www.findukproperty.com](http://www.findukproperty.com)







# H7 Fishburn, Teesside – 2-Bed Semi

## Lounge 1 and 2

Open plan space with large patio doors at the rear of the property.





# H7 Fishburn, Teesside – 2-Bed Semi

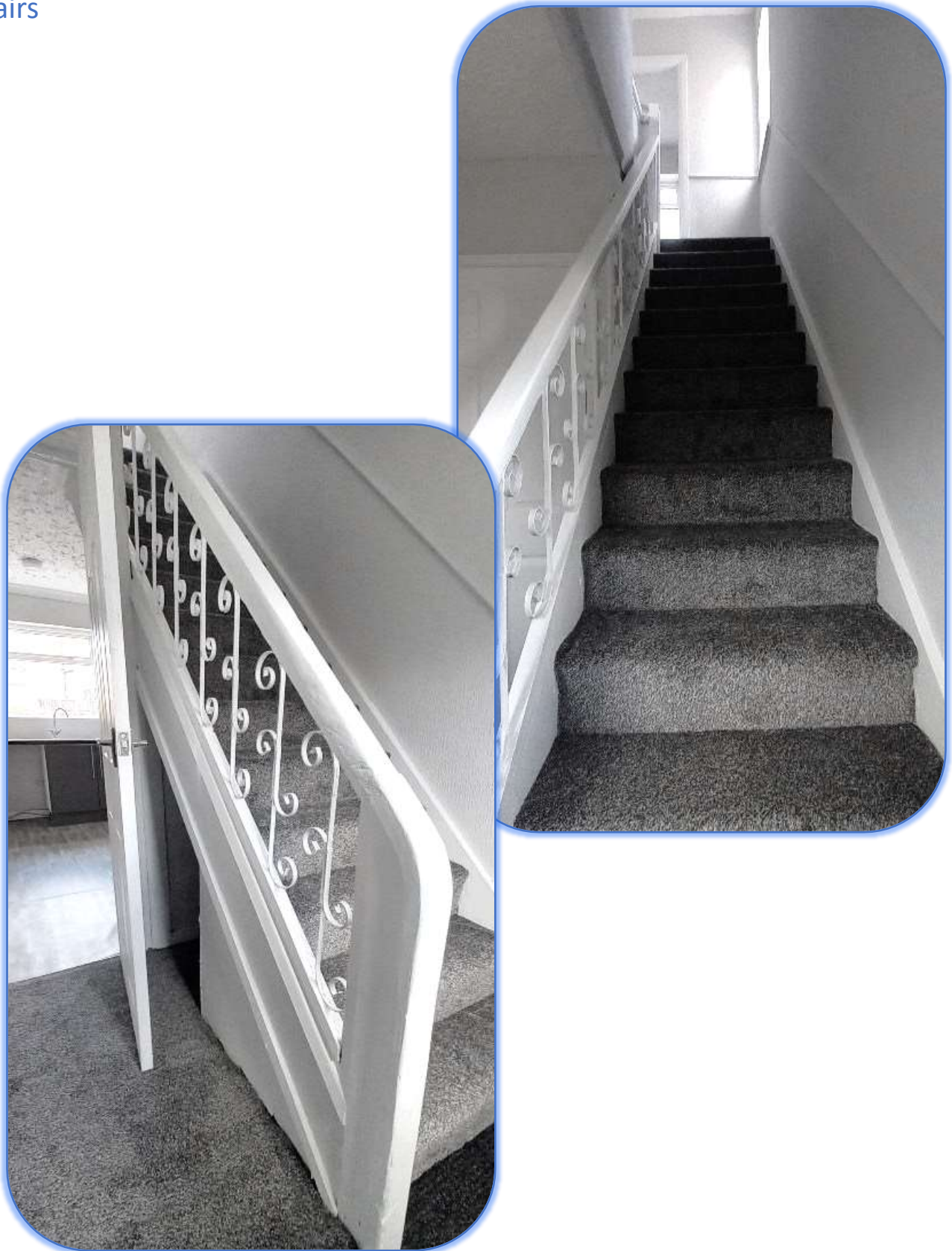
## Kitchen

Large kitchen suite with access to the rear of the property and main lounge





Stairs







## Bedroom 1







## Bedroom 2





# H7 Fishburn, Teesside – 2-Bed Semi

## Bathroom



Tel: 01282 88 24 24

[sales@findukproperty.com](mailto:sales@findukproperty.com)

[www.findukproperty.com](http://www.findukproperty.com)







# H7 Fishburn, Teesside – 2-Bed Semi

## Rear garden view

Large rear yard area with rear access to property.

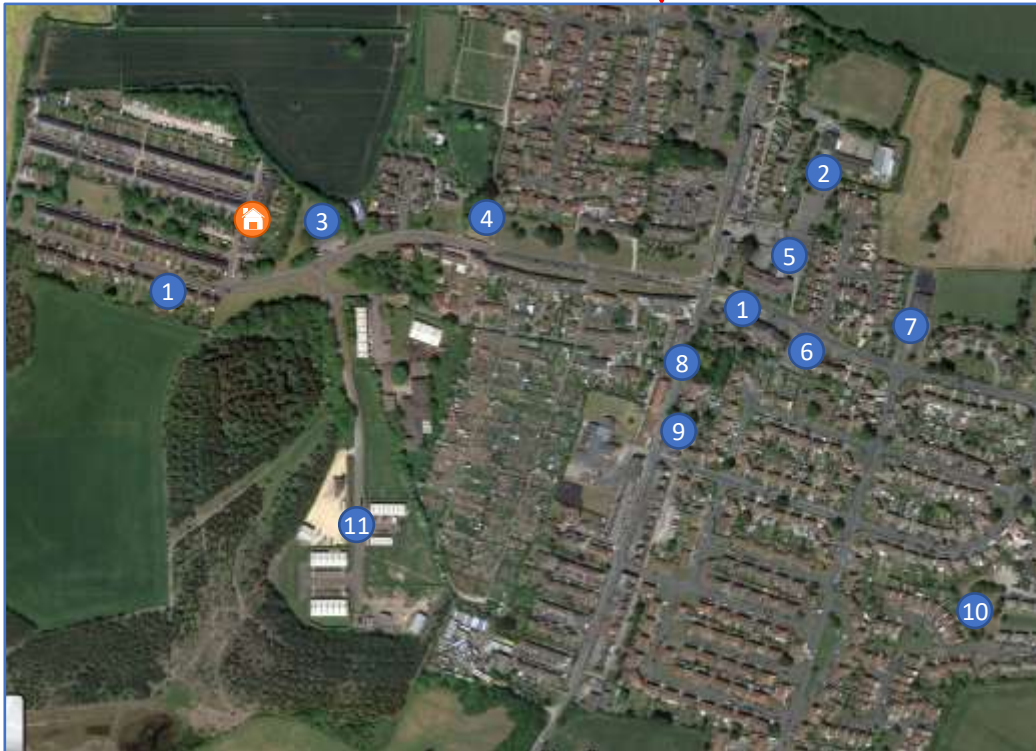
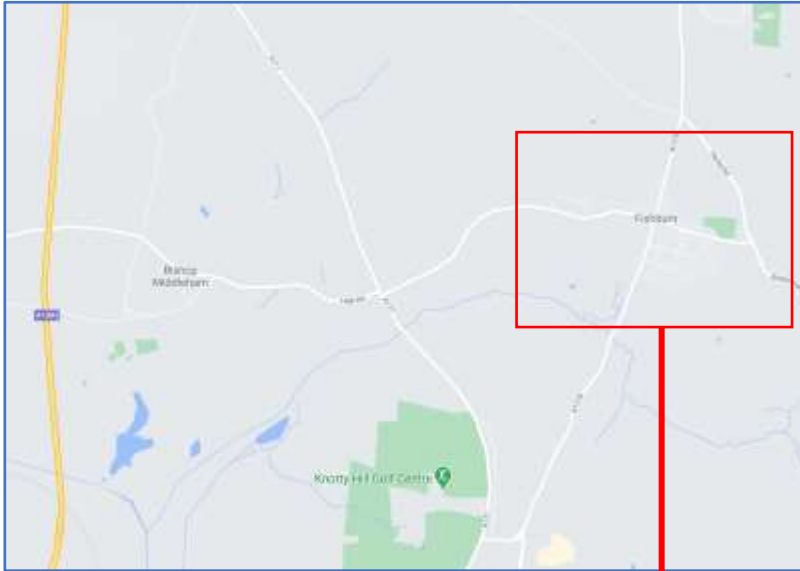




# H7 Fishburn, Teesside – 2-Bed Semi

## Fishburn Area

A picturesque village, with access to all local amenities and the motorway connecting the North and Midlands of the UK. Although Fishburn comes under Stockton-on-Tees, it is in close proximity to Hartlepool



### Map Key

- 1. Health Centres
  - 2. Local schools
  - 3. Ambulance service
  - 4. Religious buildings
  - 5. Gym
  - 6. Mini supermarket
  - 7. Community centre
  - 8. Village centre
  - 9. Post office
  - 10. Town Centre
  - 11. Park
  - 12. Industrial shops
-  Property Location





# H7 Fishburn, Teesside – 2-Bed Semi

## Stockton-on-Tees

A large market town in County Durham situated close to the River Tees and with excellent transport links to Middlesbrough and A-roads connecting the North and Middle of the UK.



Infinity Bridge (top) and Millennium Bridge (right) across the river Tees



Left: Durham University – Queens Campus: The University is situated on the River Tees and is linked to Stockton town centre *via* the bridges shown above



# H7 Fishburn, Teesside – 2-Bed Semi

## Hartlepool Town & Landmarks

Right: Town centre

Bottom: One of four shopping centres



Top: Port-side

Left: Marina

Bottom: National Museum of the Royal Navy

