

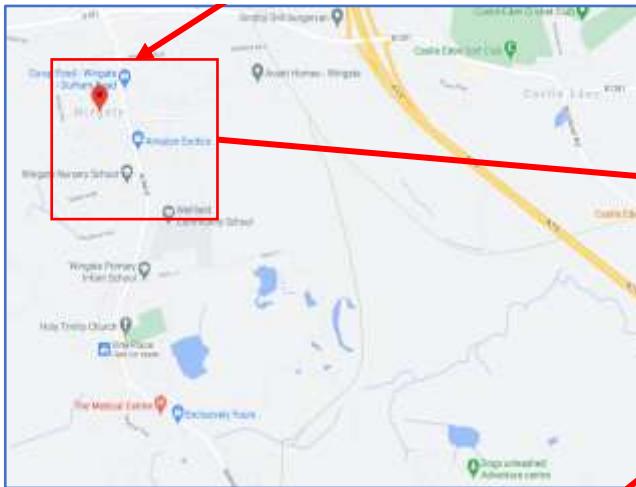


H6 Wingate, County Durham – Large 3 Bed + Gardens

Location Map



Wingate – Close to Hartlepool



Overhead Street View





H6 Wingate, County Durham – Large 3 Bed + Gardens

Front View

A large 3-bed house with front garden area and large separate rear garden. Located North West of Hartlepool in Durham County A large bay window at front of property. The property is to be renovated after the tenants move out..





H6 Wingate, County Durham – Large 3 Bed + Gardens

Street Views



Tel: 01282 88 24 24

sales@findukproperty.com

www.findukproperty.com

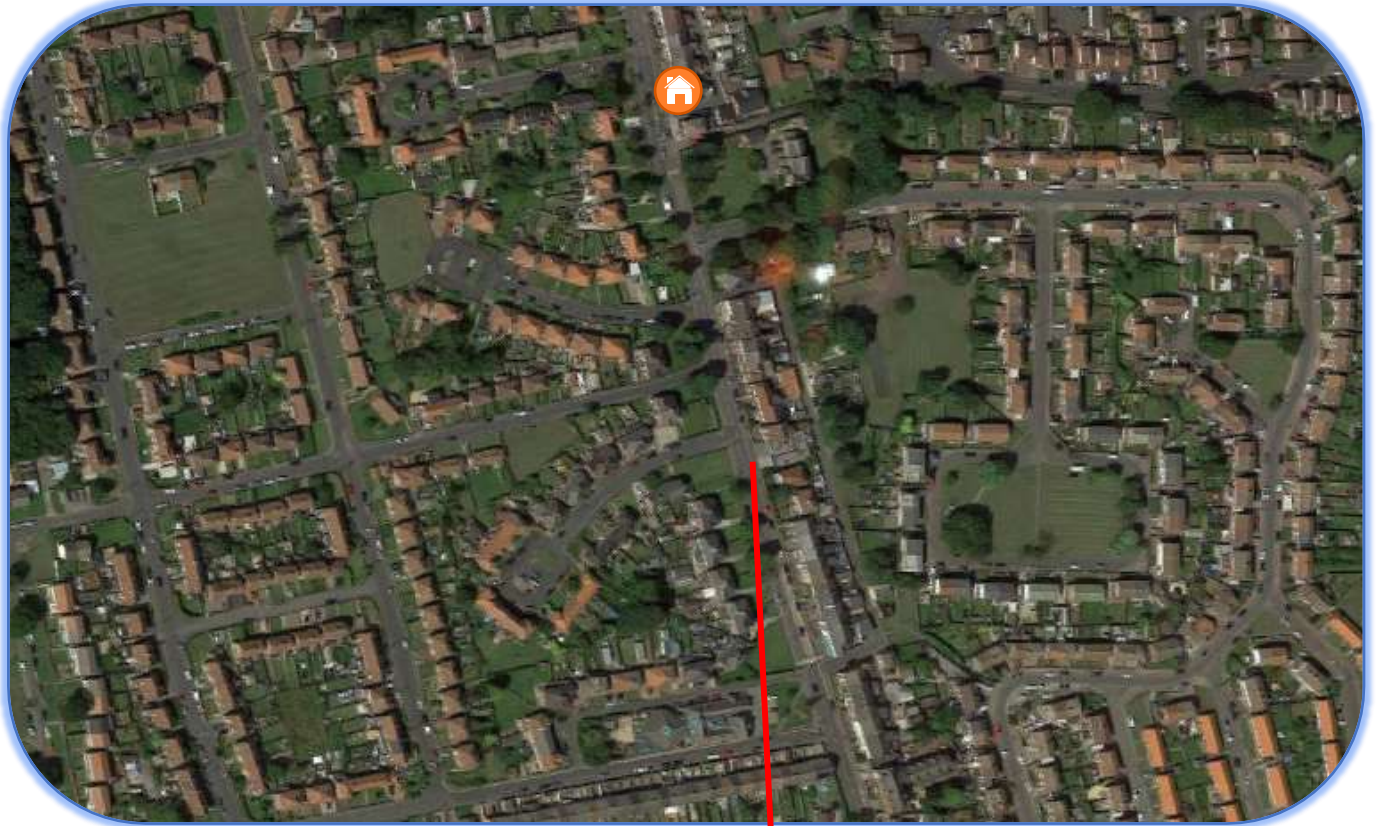




H6 Wingate, County Durham – Large 3 Bed + Gardens

Community Views

Property is located close to a school, post office & takeaways.





H6 Wingate, County Durham – Large 3 Bed + Gardens

Lounge 1





H6 Wingate, County Durham – Large 3 Bed + Gardens

Lounge 2





H6 Wingate, County Durham – Large 3 Bed + Gardens

Kitchen





H6 Wingate, County Durham – Large 3 Bed + Gardens

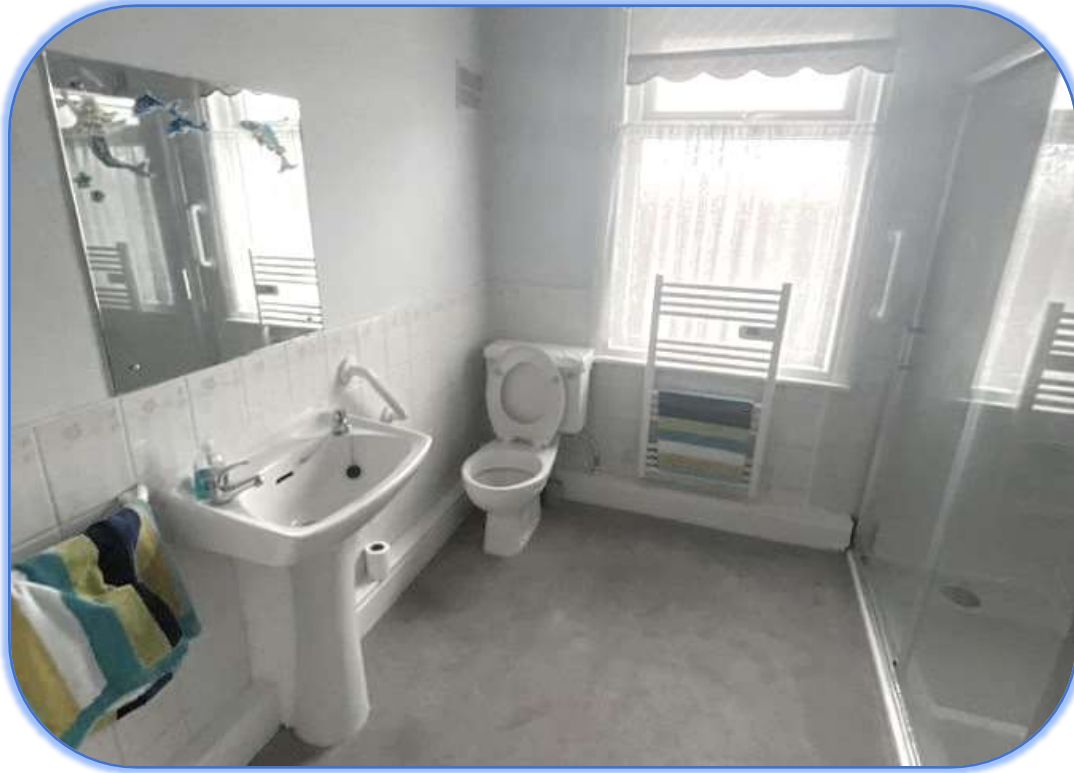
Stairs and Landing





H6 Wingate, County Durham – Large 3 Bed + Gardens

Bathroom





H6 Wingate, County Durham – Large 3 Bed + Gardens

Bedroom 1





H6 Wingate, County Durham – Large 3 Bed + Gardens

Bedroom 2



Bedroom 3





H6 Wingate, County Durham – Large 3 Bed + Gardens

Rear View & Large Garden, Garage and sheds - at the back

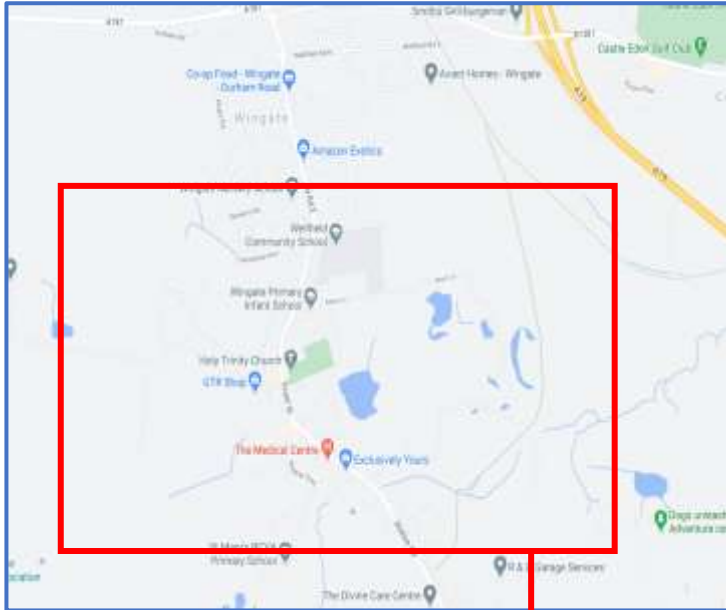





H6 Wingate, County Durham – Large 3 Bed + Gardens

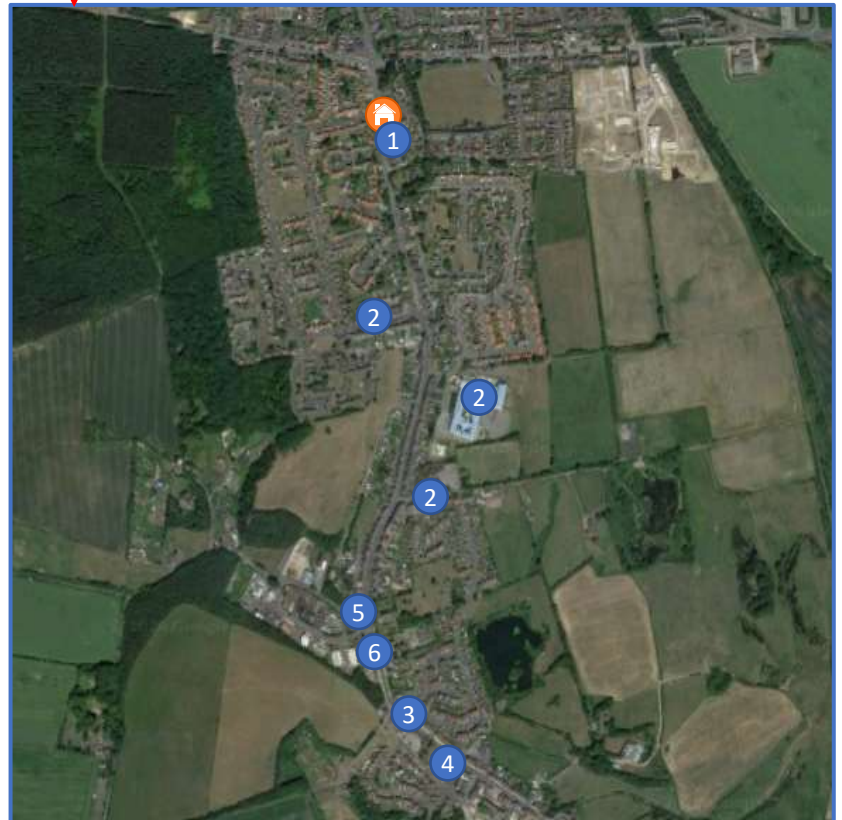
Wingate Area

Village location close to the main town of Hartlepool, with access to local schools, shops and amenities.



Map Key

- 1. Supermarket
- 2. Local Schools and Nursery
- 3. High Street – Local Shops
- 4. Medical Centre
- 5. Local Church
- 6. Library
-  Location of Property





H6 Wingate, County Durham – Large 3 Bed + Gardens

Hartlepool Town Centre - Very close by



Middleton Grange Shopping Centre

Aerial view of Hartlepool Town Centre next to Hartlepool Quay and Marina.

