



H4 Middlesbrough – 3 Bed House

Location Map



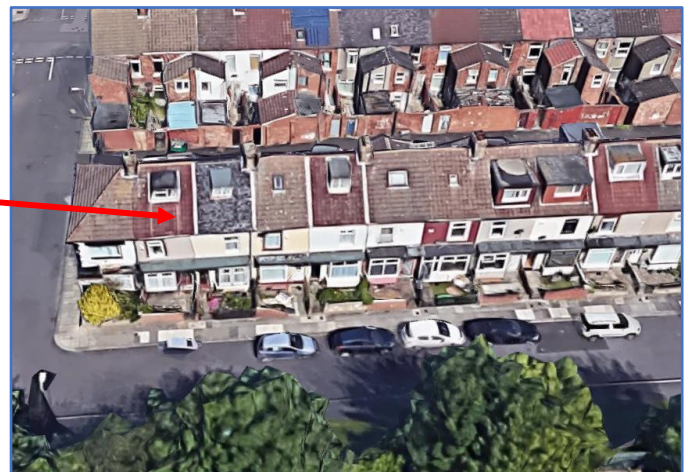
Middlesbrough East



North Ormesby



Overhead Street View



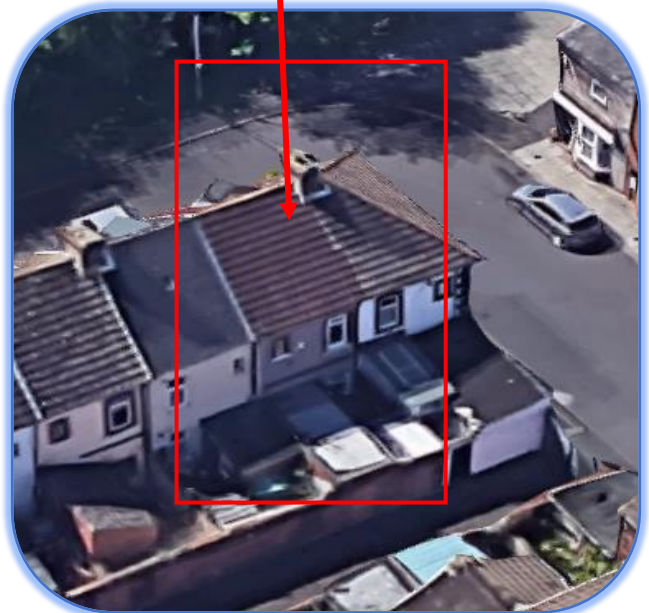


Front View

A well presented mid-terrace property located just around the corner from local shops, schools and other amenities. Front private area facing green areas. **PROPERTY TO BE FULLY RENOVATED**



Overhead Front & Rear View





Street Views – green areas opposite.





Overhead Views – School and green areas opposite.






Community View

Property is located close to green spaces with local shops close by.



 Location of House

Green space



Local shops





Lounge 1





Kitchen/Dining Area





Bedroom 1





Bedroom 2





Bedroom 3





Bathroom





Rear Views

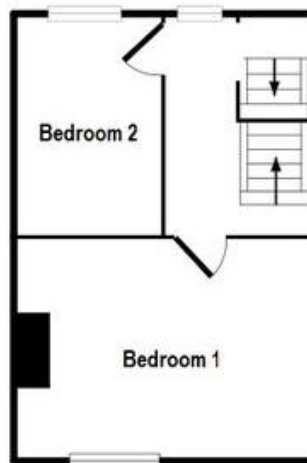




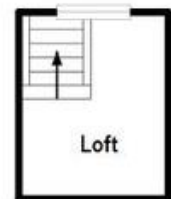
Floorplan



GROUND FLOOR



FIRST FLOOR



SECOND FLOOR



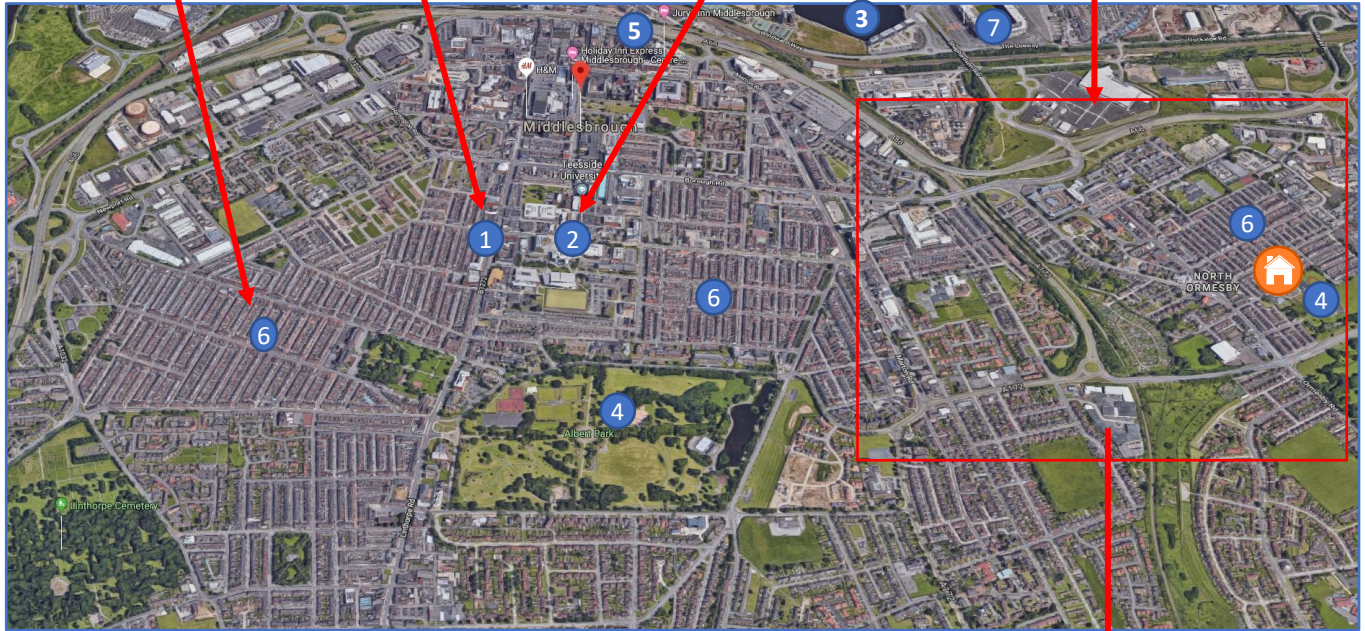
Middlesbrough Area

Residential Centre

Town Centre

Teesside University

Middlesbrough East /
North Ormesby



Middlesbrough East – North Ormesby

Map Key

1. Middlesbrough Town Centre
2. Teesside University
3. River Tees
4. Parks & Play area
5. Train Station
6. Terraced Residential Areas
7. Riverside Stadium

- A. Local schools
- B. Auto retail shops
- C. Religious buildings
- D. Health centre community
- E. Local shops
- F. Supermarkets / Market
- G. Ormesby Beck (river)



Location of House





Middlesbrough - Teesside

Middlesbrough is the capital of Teesside (a metropolis around the River Tees) and the Tees Valley. It is famous for its football club, industry and Transporter bridge, which connects the South and North ends of the river Tees.

The town centre itself has 4 large shopping centres (right). The Teesside University campus (below) is in the heart of the town centre.



Aerial view of Middlesbrough Town Centre next to River Tees

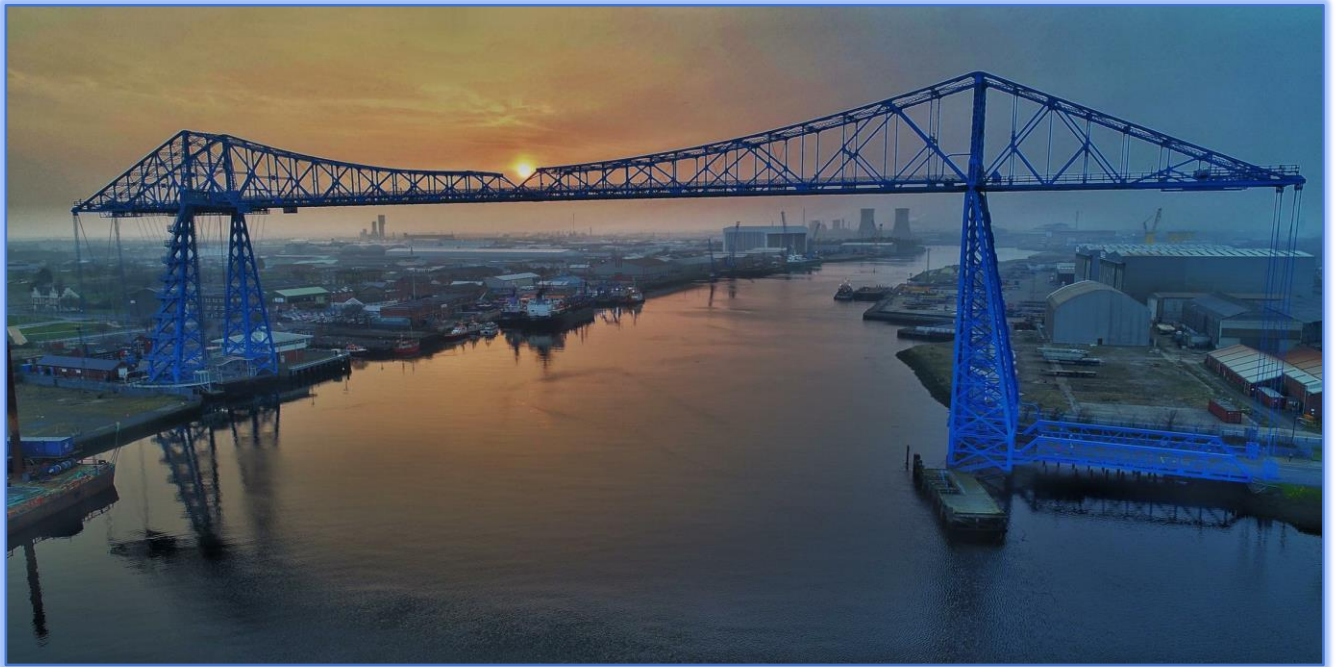




Middlesbrough - Teesside



Top Left: Middlesbrough snow centre to open in 2022; Top Right: Middlesbrough Football stadium



Top: Transporter bridge across the River Tees
Bottom: Albert Park, a 30-acre park in the heart of Middlesbrough

