



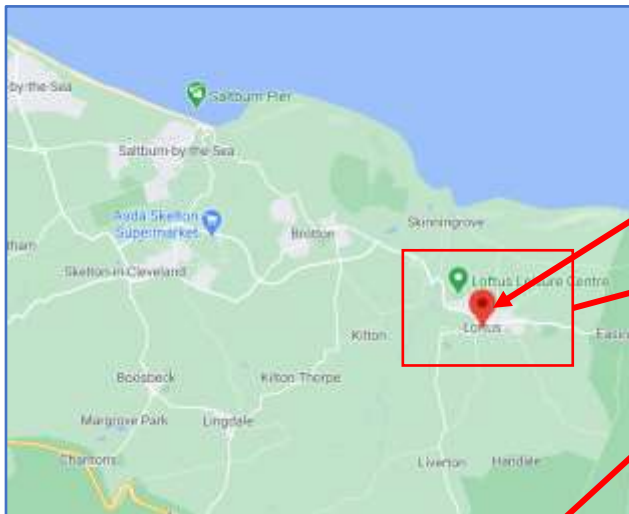
H4 Loftus, North Yorkshire – 3-Bed

Location Map

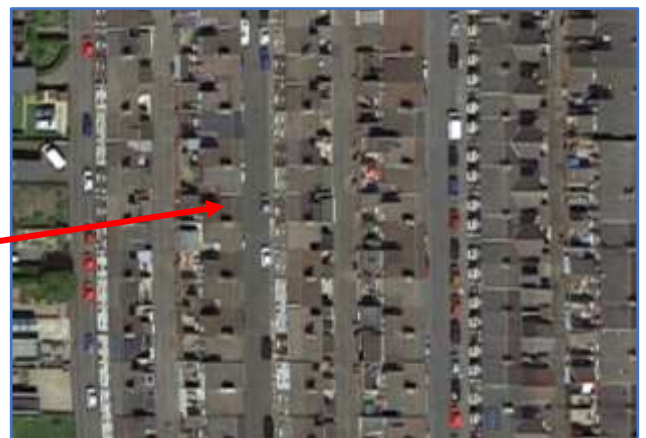


Close to South Middlesbrough

Loftus, Saltburn-by-the-Sea



Overhead Street View

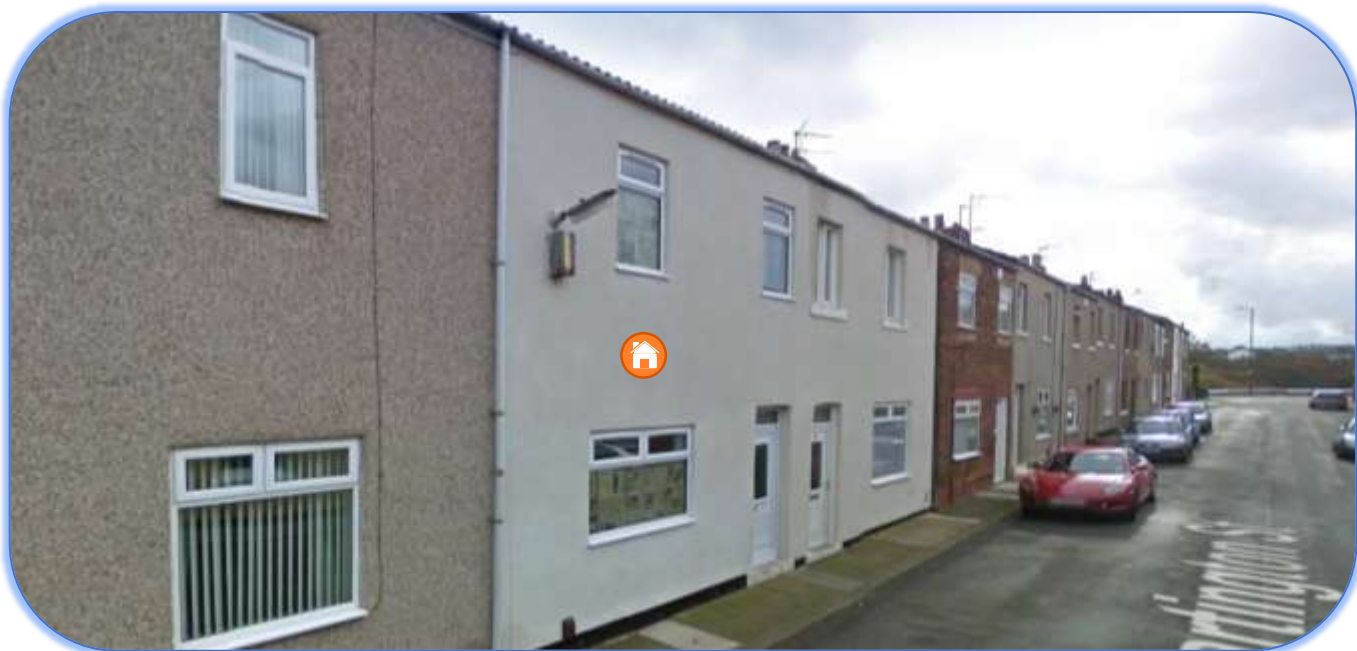




H4 Loftus, North Yorkshire – 3-Bed

Front View

3 Bed terraced house located in Loftus, in North Yorkshire – near the seaside. Property renovation has just completed and property will be rented out soon



Street View





H4 Loftus, North Yorkshire – 3-Bed

Lounge 1 & 2 – Open plan





Kitchen





H4 Loftus, North Yorkshire – 3-Bed

Bedroom 1





H4 Loftus, North Yorkshire – 3-Bed

Bedroom 2





H4 Loftus, North Yorkshire – 3-Bed

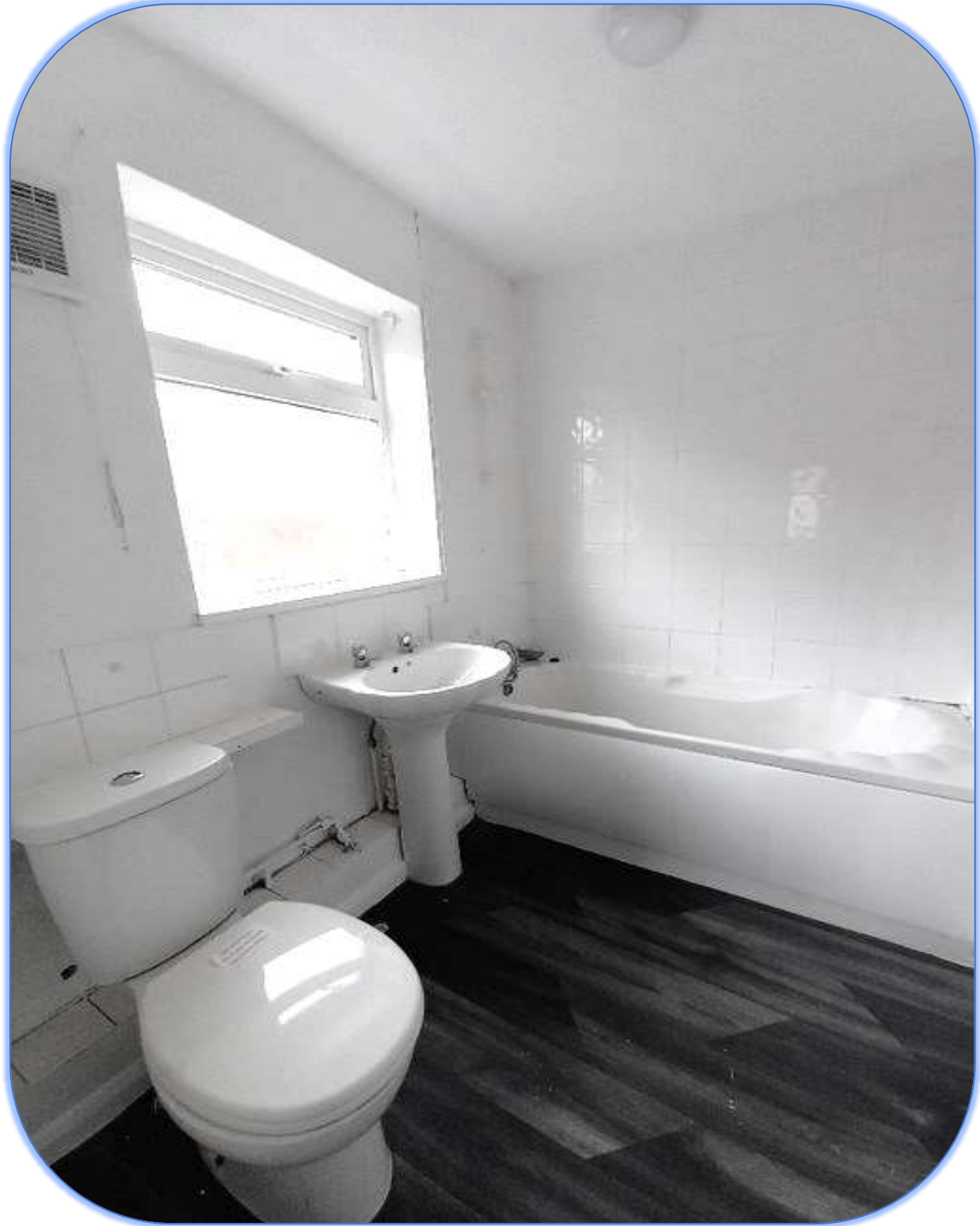
Bedroom 3





H4 Loftus, North Yorkshire – 3-Bed

Bathroom





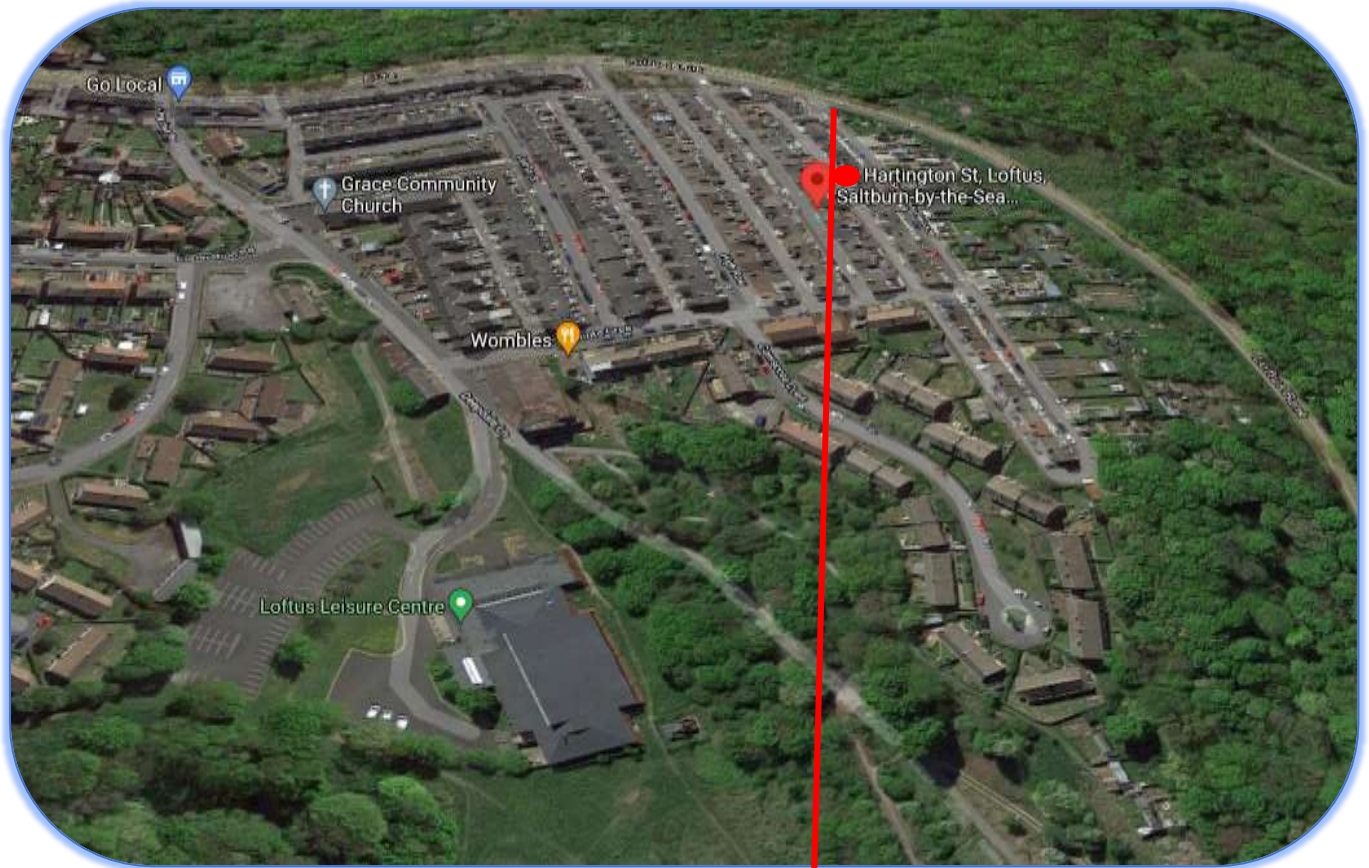
Rear yard





H4 Loftus, North Yorkshire – 3-Bed

Community Views





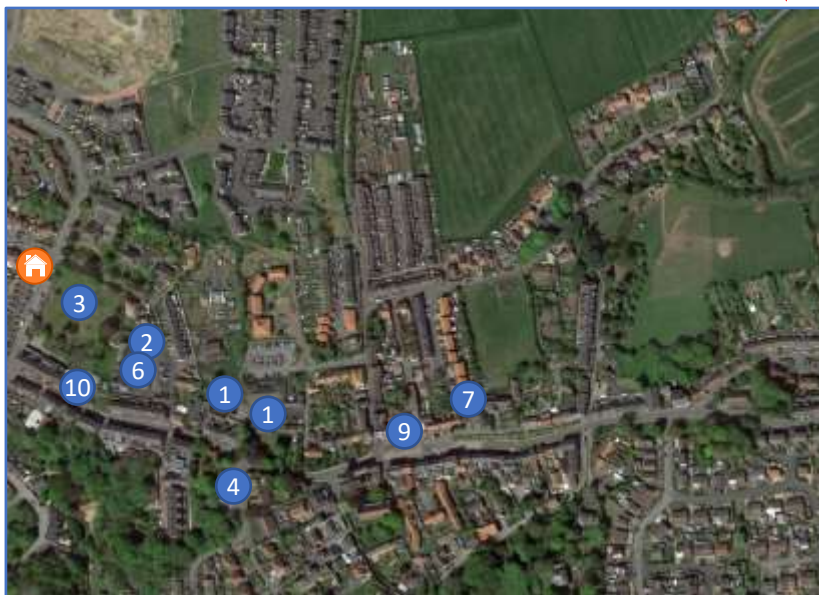
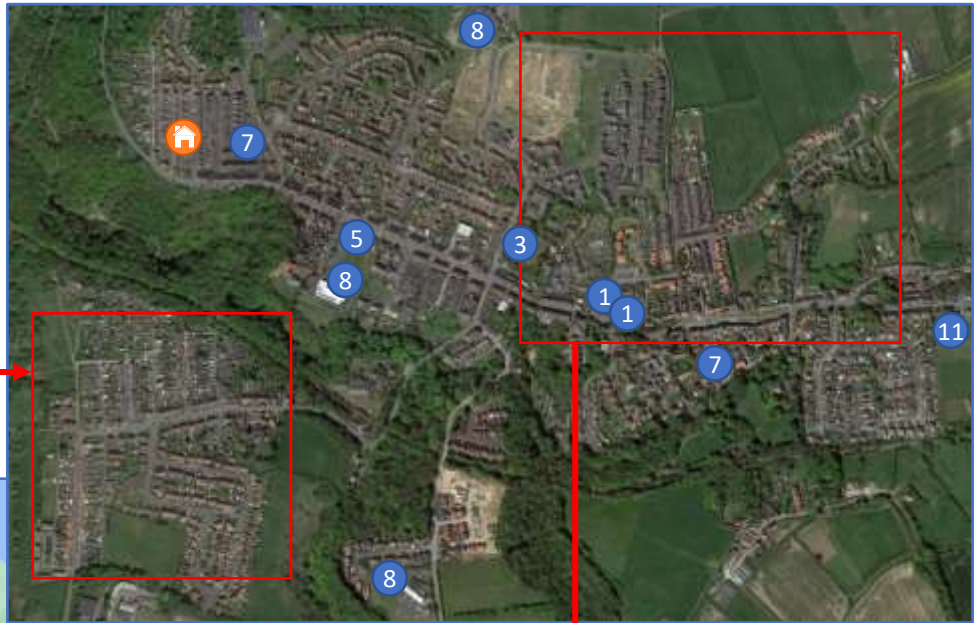
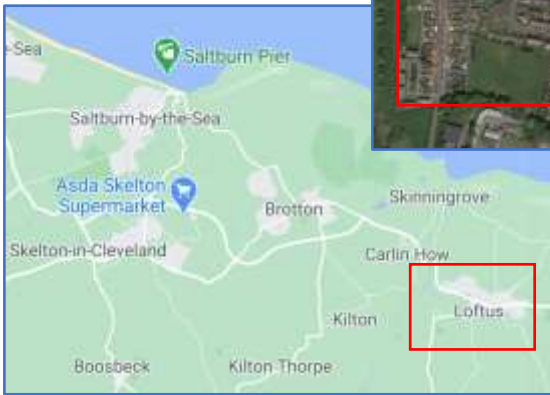
H4 Loftus, North Yorkshire – 3-Bed

Saltburn-by-the-Sea Area

Loftus is a town located 12 mins drive away from Skelton-in-Cleveland and the seaside town of Saltburn-by-the-Sea, and 25 mins from the main city of Middlesbrough.

Loftus

Liverton (Smaller adjacent village)



Map Key

- 1. Doctors surgery / health clinics
- 2. Youth centre
- 3. Park
- 4. Library
- 5. Post office
- 6. Community centre
- 7. Church
- 8. Local schools
- 9. Mini markets
- 10. Local shops
- 11. Cricket Club

Location of House



H4 Loftus, North Yorkshire – 3-Bed

Loftus & Saltburn-by-the-Sea

Loftus is a town near the seaside town of Saltburn-by-the-Sea. It is set in the picturesque county of North Yorkshire, close to the North Yorkshire Moors, a national park



Top: Saltburn-by-the-Sea seaside & pier; Bottom: Loftus town

Top: Loftus church
Bottom: Saltburn-by-the-Sea centre



Left: View of the North Yorkshire Moors



H4 Loftus, North Yorkshire – 3-Bed

Middlesbrough - Teesside

Middlesbrough is approx. 30 mins drive away from Loftus and is the capital of Teesside (a metropolis around the River Tees) and the Tees Valley. It is famous for its football club, industry and Transporter bridge, which connects the South and North ends of the river Tees.

The town centre itself has 4 large shopping centres (right). The Teesside University campus (below) is in the heart of the town centre.



Bottom: Transporter bridge across the River Tees; Right: Middlesbrough Football stadium

