



H2-L Hammond Street, Nelson Standard 2-Bed

Location Map



Nelson

South of Town Centre





H2-L Hammond Street, Nelson Standard 2-Bed

Front View

A spacious 2- bed mid-terrace house with rear yard, made of original. The property lies in a desirable upmarket area of Nelson. The property has been fully renovated and is now rented out.





H2-L Hammond Street, Nelson Standard 2-Bed

Aerial view with green plots to front and back street to rear. Parking is on side streets



Back Street. The house is in the middle of the street

Front View- The garden plots at the front are common areas and do not belong to the houses. But this area looks nice.



Front and back of the property

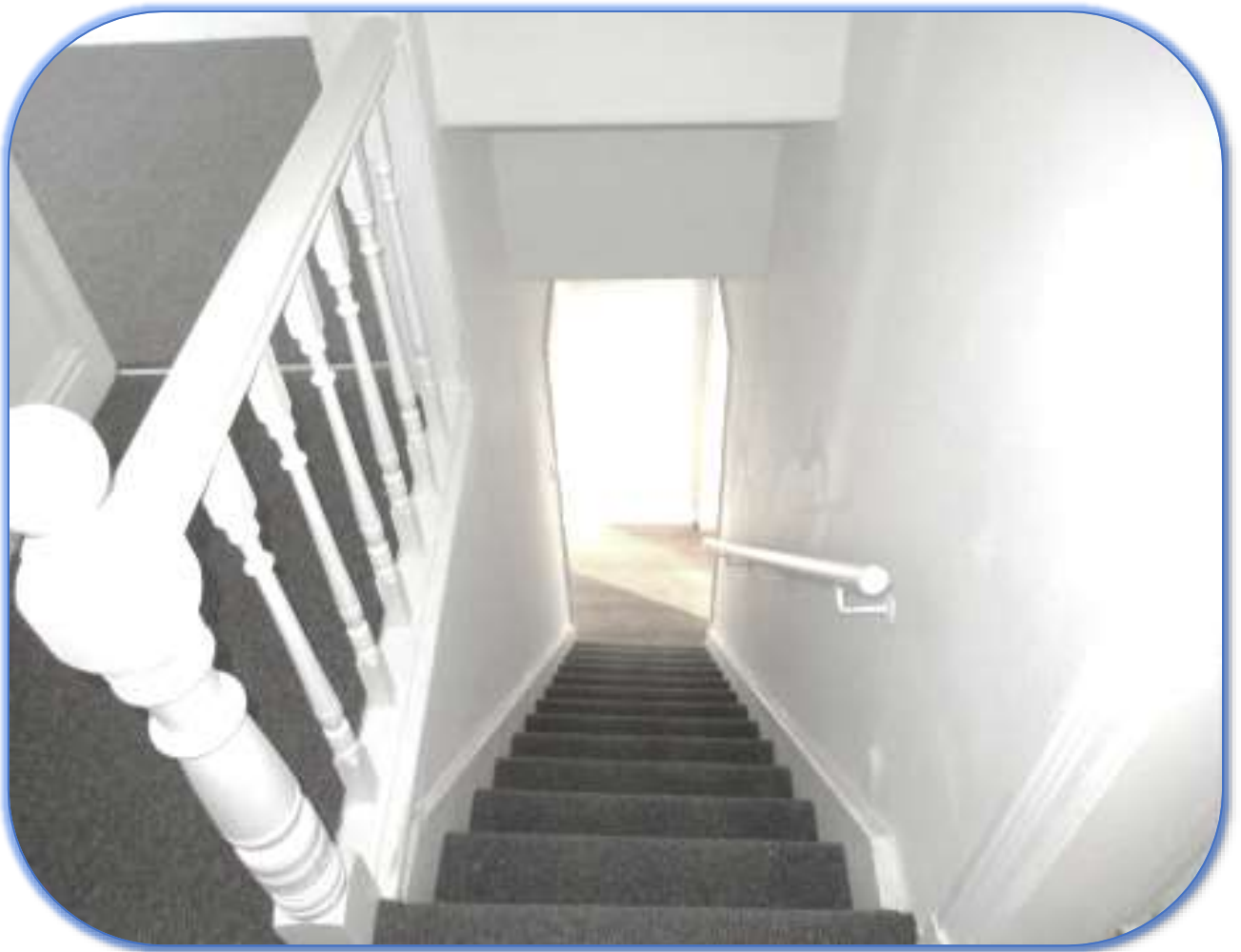
Lounge



Kitchen and Dining Area

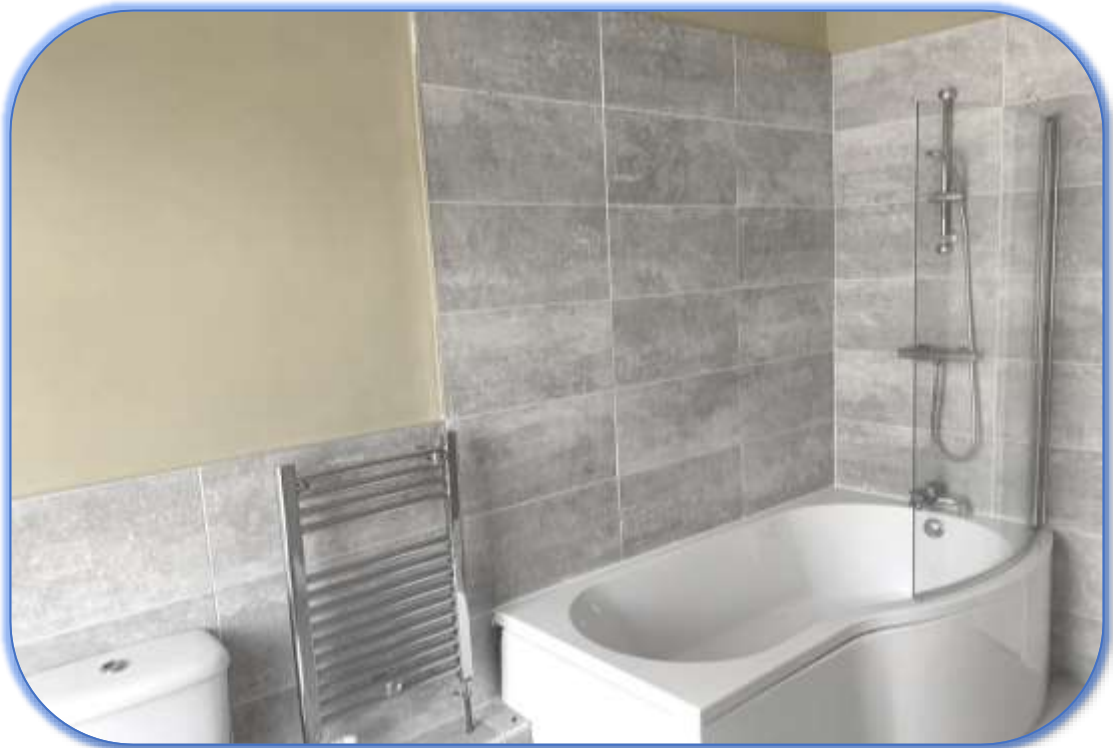


Stairs and Landing





Bathroom



Bedroom 1



Bedroom 2





H2-L Hammond Street, Nelson Standard 2-Bed

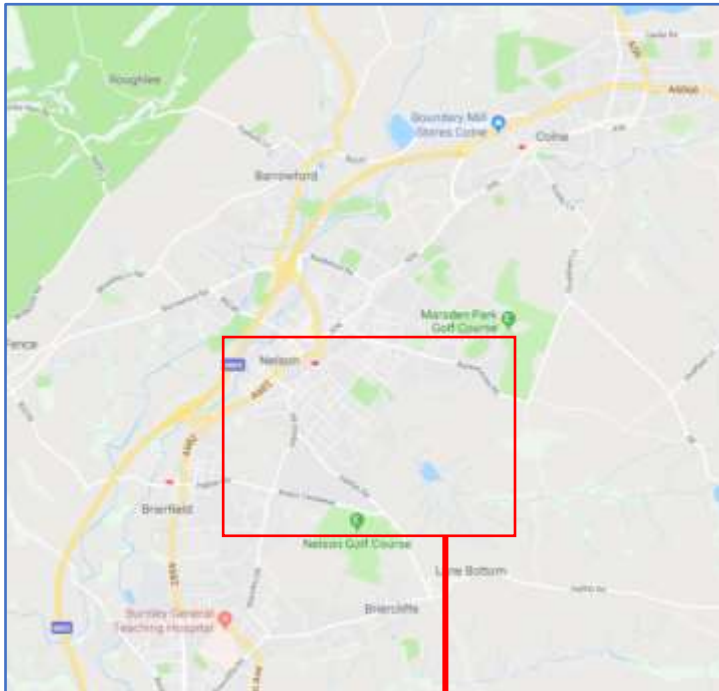
Rear



H2-L Hammond Street, Nelson Standard 2-Bed

Nelson Area

Prime location with access to transport routes, local parks, schools and amenities



Map Key

- 1. Hospital
- 2. Train Station
- 3. Local Schools
- 4. Religious Buildings
- 5. Park
- 6. Post Office
- 7. Food Market
- 8. Bus Stop
- 9. Natural Reserve
- 10. Fitness Centre
- 11. Access to Motorway

Hammond Street





H2-L Hammond Street, Nelson Standard 2-Bed

Local Area and Town Centre

Local park, streets and town centre

