



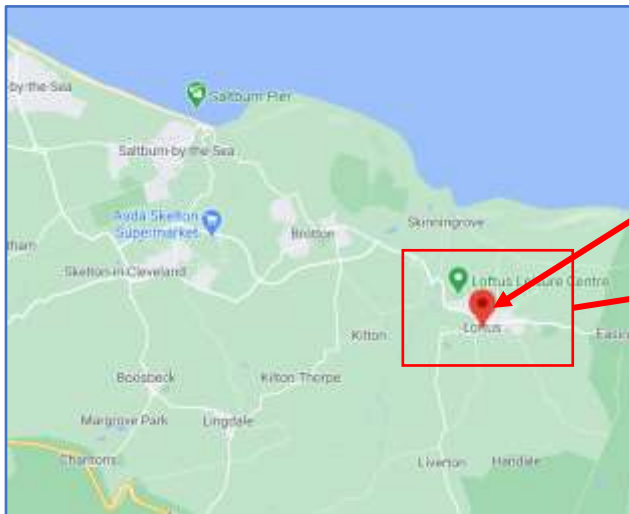
# H1 Saltburn-by-the-Sea - North Yorkshire –Small 2 Bed

## Location Map



Close to South Middlesbrough

Carlin How, Saltburn-by-the-Sea



Overhead Street View





# H1 Saltburn-by-the-Sea - North Yorkshire –Small 2 Bed

## Front View

A well presented small 2-bed house – near the seaside with front garden area.



## Street View





# H1 Saltburn-by-the-Sea - North Yorkshire –Small 2 Bed

## Street View



Tel: 01282 88 24 24

[sales@findukproperty.com](mailto:sales@findukproperty.com)

[www.findukproperty.com](http://www.findukproperty.com)





# H1 Saltburn-by-the-Sea - North Yorkshire –Small 2 Bed

Lounge



Tel: 01282 88 24 24

[sales@findukproperty.com](mailto:sales@findukproperty.com)

[www.findukproperty.com](http://www.findukproperty.com)





# H1 Saltburn-by-the-Sea - North Yorkshire –Small 2 Bed

## Kitchen





# H1 Saltburn-by-the-Sea - North Yorkshire –Small 2 Bed

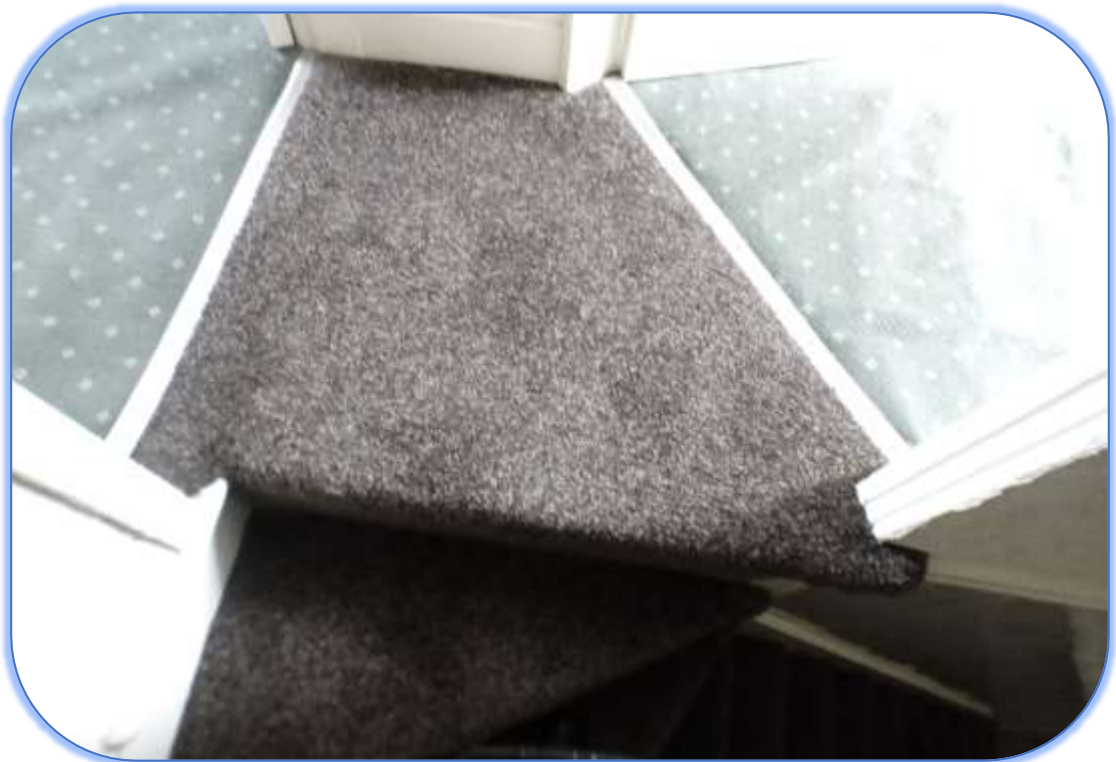
## Bathroom





# H1 Saltburn-by-the-Sea - North Yorkshire –Small 2 Bed

## Stairs and Landing





# H1 Saltburn-by-the-Sea - North Yorkshire –Small 2 Bed

Bedroom 1







# H1 Saltburn-by-the-Sea - North Yorkshire –Small 2 Bed

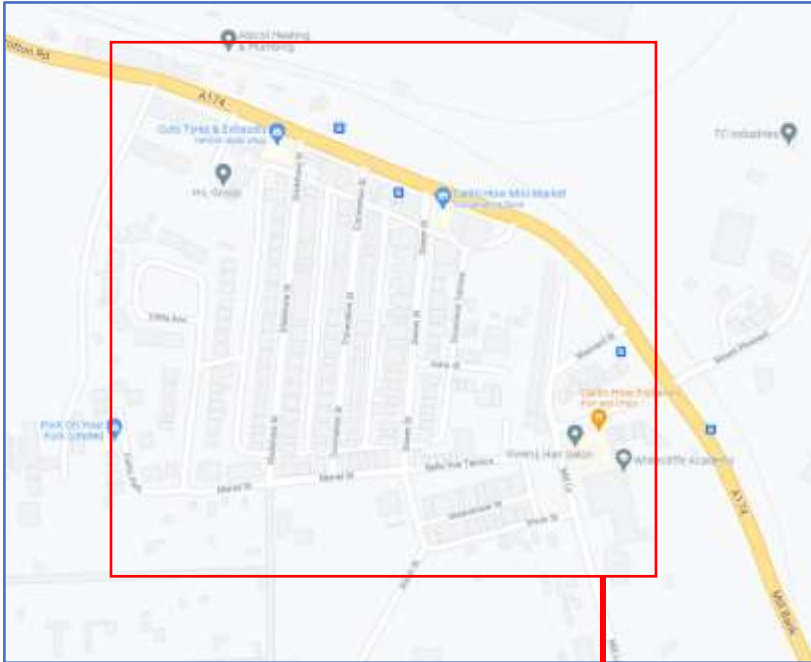
## Bedroom 2




# H1 Saltburn-by-the-Sea - North Yorkshire –Small 2 Bed

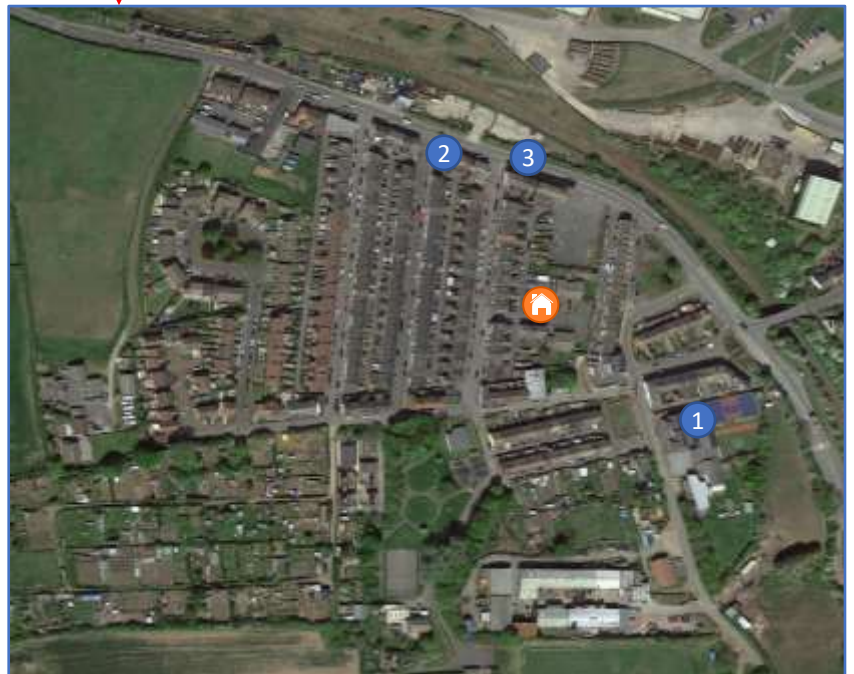
## Carlin How Area

Carlin How is a suburb of Saltburn-by-the-Sea, a town located 8 mins drive away from Skelton-in-Cleveland and Saltburn-by-the-Sea centre, and 30 mins from the main city of Middlesbrough.



### Map Key

- 1. School
- 2. Shop
- 3. High Street
- 4. Post office
-  Location of House





# H1 Saltburn-by-the-Sea - North Yorkshire –Small 2 Bed

## Loftus & Saltburn-by-the-Sea

Loftus is a town near the seaside town of Saltburn-by-the-Sea. It is set in the picturesque county of North Yorkshire, close to the North Yorkshire Moors, a national park



Top: Saltburn-by-the-Sea seaside & pier; Bottom: Loftus town

Top: Loftus church  
Bottom: Saltburn-by-the-Sea centre



Left: View of the North Yorkshire Moors



# H1 Saltburn-by-the-Sea - North Yorkshire –Small 2 Bed

## Middlesbrough - Teesside

Middlesbrough is approx. 30 mins drive away from Loftus and is the capital of Teesside (a metropolis around the River Tees) and the Tees Valley. It is famous for its football club, industry and Transporter bridge, which connects the South and North ends of the river Tees.

The town centre itself has 4 large shopping centres (right). The Teesside University campus (below) is in the heart of the town centre.



Bottom: Transporter bridge across the River Tees; Right: Middlesbrough Football stadium

